

DripWorks®



Quality Irrigation Since 1991



SAVE
5%
on \$99+
with code DWCAT25
Exp. 12/31



2025 Product Catalog
Dripworks.com | 800.522.3747

TABLE OF CONTENTS

- Adapters** 21
- Complete Irrigation Kits** 4-5
- Drip Tape** 10
- Emitters**
 - Basic Drip Emitters 23
 - Pressure Compensating 24-25
- Emitter Tubing ½"** 7
- Fertilizer Injectors** 35-37
- Fittings**
 - Barbed Fittings 34
 - Drip Tape Fittings 11
 - Easy Loc Fittings 8-9
 - ⅛" and ¼" Microfittings 13
 - Manifold Fittings 47
 - PVC Fittings & Accessories 44-45
- Filters**
 - Garden Filters 16
 - Large Filters 17-18
- Freeze Protection** 46
- Garden Beds** 27
- General Information** 26
- Greenhouse Watering** 38-39
- Hose Fittings** 20
- Landscape Lighting** 43
- Magnetic Water Conditioning** ... 46
- Mainline Tubing** 6
- Micro Tubing** 15
- Netafim Tube & Fittings** 40-41
- Pond Liners** 42
- Pressure Regulators** 19
- Professional Power Tools** 43
- Punches** 14
- Soaker Dripline ¼"** 12
- Sprayers**
 - Adjustable Sprayers & Shrubblers 28-29
 - Mini-Sprinklers 30-31
 - Pressure Compensating Sprinklers 32-33
- Support Stakes & Hold Downs** ... 15
- Timers**
 - Bluetooth 51
 - Battery DC 51-53
 - Electric AC 54
 - Solar 55
 - WiFi 50
- Tools** 22
- Valves**
 - Battery (DC) 48
 - Electronic (AC) 49
 - Manual Ball Valves 44



Welcome to the 2025 version of the DripWorks catalog. We are very excited to introduce our new product lines. Since we started in 1991, we have believed that drip irrigation is the most efficient method of watering. We have enabled farmers, homeowners, viticulturists, herbalists, plant nursery owners, and landscapers to have a reliable source for the highest-quality irrigation products.

By automating and installing a drip system, you can easily save time, money, and water. In one or two seasons, you can make back the cost of purchasing a system by lowering your water bills by up to 60%.

The DripWorks website dripworks.com is an invaluable resource for those who want to purchase a system. Check out the Gallery of Plans, How-To Videos, and FAQs, or use our "chat" service to answer your questions. You can also check us out on YouTube, Facebook, or Instagram.

If you need to call DripWorks with questions, our representatives will help direct you to the right products for your specific application. Our customers have always appreciated the human touch that DripWorks offers, and so will you.

DripWorks provides top-trusted brands to ensure durable and long-lasting products that will help your plants and gardens thrive!

DripWorks Team

NEW SPRINKLERS AND POWER TOOLS!



Yard & Lawn Sprinklers
Page 33

Professional Power Tools
Page 43

Wholesale Pricing Available Online!
Log into Dripworks.com to view pricing and to register for a Pro Member Account



ALWAYS HERE FOR YOU

Our experts know their stuff and they're here to help.

Live chat at [Dripworks.com](https://www.dripworks.com)
or 800.522.3747

Mon-Fri, 8am to 4pm PST.



FREE ONLINE RESOURCES

Find how-to videos, drip planning guides, FAQs, and more on our Resources page at [Dripworks.com](https://www.dripworks.com)



ORDERING IS EASY!

Place your DripWorks order online or give us a call.

[Dripworks.com](https://www.dripworks.com)
800.522.3747



JOIN OUR COMMUNITY

Keep up with DripWorks on Facebook, Instagram, YouTube and Pinterest.

@DripWorksUSA



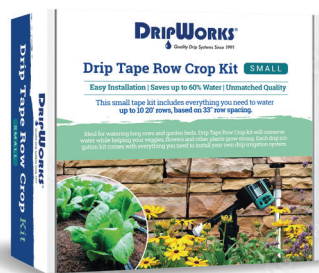
COMPLETE IRRIGATION KITS

BEST SELLER!

DRIP TAPE KITS FOR ROW CROPS

For long rows and large raised beds, drip tape is a favorite for backyard gardeners.

View Irrigation Kits and Greenhouse Mistlers

Small Drip Tape Kit

Waters 10 20' rows. (Expands to 1,200' of low-flow drip tape.)

- 200' of Drip Tape
- Filter and Pressure Regulator
- 50' of 1/2" Mainline Tubing
- 1/2" Mainline and Drip Tape Fittings
- Punch and Hold Down Stakes

KDT1 Small Kit \$127.95
KDT1-T Kit plus Timer \$177.95

Medium Drip Tape Kit

Waters 20 100' rows (1/8 acre*).

- 2,000' of Drip Tape
- Filter and Pressure Regulator
- 100' of 1/2" Mainline Tubing
- 1/2" Mainline and Drip Tape Fittings
- Punch and Hold Down Stakes
- High Flow Hose Y**

KDT2 Medium Kit \$472.95
KDT2-T Kit plus Timer \$527.95

Large Drip Tape Kit

Waters 40 100' rows (1/4 acre*).

- 4,000' of Drip Tape
- Filter and Pressure Regulator
- 200' of 3/4" Mainline Tubing
- 3/4" Mainline and Drip Tape Fittings
- Punch and Hold Down Stakes
- High Flow Hose Y**

KDT3▲ Large Kit \$655.95
KDT3-T▲ Kit plus Timer \$849.95

Drip Tape is low-flow, 15 mil, emitters spaced 8" OC. *Acreage estimations based on 33" row spacing. Your situation may vary.

**High Flow Hose Y (HYVHPL, p. 20) is used to divide the system into two zones. Note: Use a high-flow timer for the Medium and Large Drip Tape Kits.

A kit isn't completely efficient without a timer. Shop at DRIPWORKS.COM

GARDEN BED KITS

These kits include all of the parts you need to go from your faucet to your garden beds. Each kit includes our popular and versatile 1/4" Soaker Dripline. Soaker Dripline is flexible and can be used in straight rows, curved around plants and snaked through dense planting areas.



Small Garden Bed Kit

Waters up to 3 Beds.**

- 100' Soaker Dripline*
- 1/2" and 1/4" Fittings
- 50' of 1/4" Tubing
- Filter and PSI Regulator
- Punch and Hold Downs
- 50' of 1/2" Mainline Tubing

KGB1 Small Kit \$98.95
KGB1-T Kit plus Timer** \$159.95

Medium Garden Bed Kit

Waters up to 9 Beds.**

- 300' Soaker Dripline*
- 1/2" and 1/4" Fittings
- 100' of 1/4" Tubing
- Filter and PSI Regulator
- Punch and Hold Downs
- 100' of 1/2" Mainline Tubing

KGB2 Medium Kit \$161.95
KGB2-T Kit plus Timer** \$216.95

Large Garden Bed Kit

Waters up to 18 Beds.**

- 600' Soaker Dripline*
- 3/4" and 1/4" Fittings
- 200' of 1/4" Tubing
- Filter and PSI Regulator
- Punch and Hold Downs
- 250' of 3/4" Mainline Tubing

KGB3▲ Large Kit \$319.95
KGB3-T▲ Kit plus Timer** \$409.95

*Emitters Spaced 12" OC. **Based on 4'x8' beds. Note: We recommend a high-flow timer with Large Kit (p. 51).

If it needs to be watered, we've got the kits to do it at DRIPWORKS.COM



ROSE AND SHRUB KITS

Ideal for bushes, shrubs, or small trees.

Small Rose and Shrub Kit

Waters up to 15 bushes.

- 15 PC Shrubblers
- Filter and PSI Regulator
- ¼" and ½" Fittings
- Punch and Hold Down Stakes
- 50' of ½" Mainline Tubing

KRS1 Small Kit \$82.95
 KRS1-T Kit plus Timer . . . \$139.95

Medium Rose and Shrub Kit

Waters up to 30 bushes.

- 30 PC Shrubblers
- Filter and PSI Regulator
- ¼" and ½" Fittings
- Punch and Hold Down Stakes
- 100' of ½" Mainline Tubing

KRS2 Medium Kit \$131.95
 KRS2-T Kit plus Timer . . . \$195.95



INDIVIDUAL PLANT KITS

For any garden; just place emitters where needed.

Small Individual Plant Kit

Waters up to 60 plants.

- 60 Take-Apart Emitters
- Filter and PSI Regulator
- ¼" and ½" Fittings
- Punch and Hold Down Stakes
- 50' of ½" Mainline Tubing

KIP1 Small Kit \$93.95
 KIP1-T Kit plus Timer . . . \$148.95

Medium Individual Plant Kit

Waters up to 140 plants.

- 140 Take-Apart Emitters
- Filter and PSI Regulator
- ¼" and ½" Fittings
- Punch and Hold Down Stakes
- 100' of ½" Mainline Tubing

KIP2 Medium Kit \$165.95
 KIP2-T Kit plus Timer . . . \$217.95



DECK GARDEN KITS

Quick, easy setup frees you from hand watering planters and pots.

Small Deck Garden Kit

Waters up to 45 pots.

- 100' of Soaker Dripline
- 20 Pot Drippers
- Filter and PSI Regulator
- ¼" and ½" Fittings
- Punch and Hold Down Stakes
- 50' of ½" Mainline Tubing

KDG1 Small Kit \$104.95
 KDG1-T Kit plus Timer . . . \$159.95

Medium Deck Garden Kit

Waters up to 180 pots

- 300' of Soaker Dripline
- 80 Pot Drippers
- Filter and PSI Regulator
- ¼" and ½" Fittings
- Punch and Hold Down Stakes
- 100' of ½" Mainline Tubing

KDG2 Medium Kit \$225.95
 KDG2-T Kit plus Timer . . . \$279.95



MAINLINE TUBING

This flexible, low-density polyethylene tubing is the foundation of a drip irrigation system. Simply punch holes in the strong yet pliable material to insert emitters, transfer barbs, or sprayers; then shape into straight line or curved setups.



½" Mainline Tubing

Measures almost ¾" in diameter. Recommended flow rate is 0–240 gallons per hour (GPH). (.600" ID–.700" OD)

1250	50' Roll	\$14.95
12100	100' Roll	\$18.95
12500	500' Roll	\$69.95
121000	1,000' Roll	\$129.95

¾" Mainline Tubing

Measures almost 1" in diameter. Recommended flow is 0–480 gallons per hour (GPH). (.820" ID–.940" OD)

34100	100' Roll	\$31.95
34250	250' Roll	\$74.95
34500	500' Roll	\$119.95



This polyethylene tubing is not rated for constant pressure. Use Easy Loc or barbed fittings (pp. 8, 9 and 34). Handles up to 50 PSI.

Oval Hose™

Commercial systems use this hose mainly as a high-flow, low-pressure header for Drip Tape. Larger diameter polyethylene is extruded in an oval shape to save space for shipping. Not rated for constant pressure. Uses standard barbed fittings and hose clamps, or 1" Easy Loc fittings for 1" Oval Hose.



Part #	Tubing Size	Roll Size	Maximum Operating Pressure	Flow	Price
F1250	1"	250'	42 PSI	13 GPM	\$98.95
F112150	1½"	150'	21 PSI	35 GPM	\$98.95
F112300	1½"	300'	21 PSI	35 GPM	\$184.95
F2150	2"	150'	21 PSI	73 GPM	\$124.95



irritec

GROWERS CHOICE



1/2" PRESSURE COMPENSATING EMITTER TUBING

The most versatile product for larger plantings! Great for orchards and large growers.

- Greatly reduces installation time
- Perfect for hilly terrain and long rows
- 0.5 or 1.0 GPH pressure compensating emitters
- 600" ID x .700" OD (same size as our 1/2" mainline)
- Pressure range 10–50 PSI



Watch our how-to videos at DRIPWORKS.COM

Part #	Emitter Spacing	Emitter Flow	Roll Size	Flow/100' @10-50 PSI	Max Row Length	Price
DET95	9"	0.5 GPH	100'	67 GPH	300'	\$39.95
DET95-500	9"	0.5 GPH	500'	67 GPH	300'	\$174.95
DET91	9"	1.0 GPH	100'	133 GPH	190'	\$39.95
DET91-500	9"	1.0 GPH	500'	133 GPH	190'	\$174.95
DET125	12"	0.5 GPH	100'	50 GPH	450'	\$34.95
DET125-500	12"	0.5 GPH	500'	50 GPH	450'	\$149.95
DET121	12"	1.0 GPH	100'	100 GPH	250'	\$34.95
DET121-500	12"	1.0 GPH	500'	100 GPH	250'	\$149.95
DET181	18"	1.0 GPH	100'	67 GPH	350'	\$32.95
DET181-500	18"	1.0 GPH	500'	67 GPH	350'	\$129.95
DET241	24"	1.0 GPH	100'	50 GPH	400'	\$29.95
DET241-500	24"	1.0 GPH	500'	50 GPH	400'	\$119.95
DET361	36"	1.0 GPH	100'	33 GPH	550'	\$24.95
DET361-500	36"	1.0 GPH	500'	33 GPH	550'	\$109.95

Soil Type	Annuals, Ground Covers, Gardens		Large Bushes, Shrubs, Beds, Perennials	
	Row Spacing	Emitter Spacing	Row Spacing	Emitter Spacing
Medium Sand	9"	9" or 12"	15" to 18"	12"
Loam	9" to 12"	12" or 18"	18" to 24"	18"
Clay Loam	12" to 18"	18"	20" to 30"	18"
Clay	24"	18"	24" to 36"	24"

irritec



EASY LOC FITTINGS

Easy Loc connectors offer maximum design freedom and solid reliability. You'll find all the styles you need to control the flow when and where you need it.

Get helpful tips on using Easy Loc Fittings at DRIPWORKS.COM

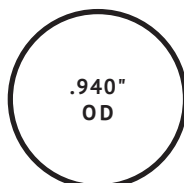
WHAT'S YOUR TUBING SIZE?

Simply determine your standard tube size and choose the Easy Loc fittings to match.



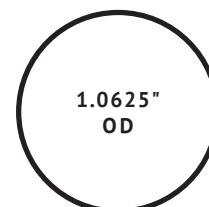
½" EASY LOC FITTINGS
Compatible with ½" drip tubing .680"-
.720" OD.

Try our ½" Mainline Tubing (p. 6) and
½" Pressure Compensating
Emitter Tubing (p. 7).



¾" EASY LOC FITTINGS
Compatible with ¾" drip tubing .880"-
.970" OD.

Try our ¾" mainline tubing (p. 6).



1" EASY LOC FITTINGS
Compatible with 1" oval hose
1.025"-1.085" OD.

Try our 1" Oval Hose (p. 6).

1/2", 3/4", AND 1" EASY LOC FITTINGS

Bulk quantity discounts available
visit DRIPWORKS.COM

EASY LOC FITTINGS



Female Hose Start with Swivel

Attach mainline tubing to a faucet, hose end, or male hose threads of a filter or adapter. A common way to start a system.

ELFH	1/2"	\$1.39
ELFH34	3/4"	\$2.95
ELFH1	1"	\$5.35



Coupler

For joining two pieces of mainline tubing. A necessary repair part.

ELC	1/2"	\$0.89
ELC34	3/4"	\$2.55
ELC1	1"	\$2.79



Tee

Use to branch off mainline tubing.

ELT	1/2"	\$2.19
ELT34	3/4"	\$5.95
ELT1	1"	\$7.49



Elbow (90° bend)

Use to go around a corner that might kink the mainline tubing.

ELL	1/2"	\$1.69
ELL34	3/4"	\$3.95
ELL1	1"	\$5.29



Male Hose End with Cap

Used to end a line. The screw-off cap makes it easy to flush lines.

ELMC	1/2"	\$1.15
ELMC34	3/4"	\$2.29
ELMC1	1"	\$2.69



Male Hose End

To flush your lines after each watering, use with a flush valve (VFH, p. 46).

ELMH	1/2"	\$0.79
ELMH34	3/4"	\$1.59



Male Pipe End

Use this male pipe thread fitting to connect tubing to pipe threads.

EL12M	1/2"	\$0.75
EL34M34	3/4"	\$1.49
EL1MP1	1"	\$1.95



1/2" x 1/4" Barb

Create a 1/2" branch line without a Tee. Flow through is approximately 80 GPH.

EL14B	1/2" x 1/4"	\$1.49
-------	-------------	--------



Valve

A full port inline valve with an easy-to-grip handle.

ELV12	1/2"	\$2.29
ELSO34	3/4"	\$4.95
ELTCV1	1"	\$8.49



Reducing Coupler

Use this reducing coupler to adapt to a larger or smaller tubing.

ELRC	3/4" x 1/2"	\$2.69
ELRC134	1" x 3/4"	\$2.95



Reducing Tee

This tee fitting is used to adapt down from a larger tubing size, when branching into smaller tubing.

ELRT	3/4" x 3/4" x 1/2"	\$5.65
ELRT112	1" x 1/2"	\$5.65
ELRT134▲	1" x 3/4"	\$6.95



Reducing Elbow

Use this reducing elbow to adapt to a smaller size tubing.

ELRL	3/4" x 1/2"	\$3.60
------	-------------	--------



Female Hose Tee with Swivel

An easy way to attach two mainlines to one hose connection.

ELFT	1/2"	\$2.29
ELFT34	3/4"	\$4.95



Male Hose Tee

Use this tee fitting to attach to any hose thread fitting.

ELMT	1/2"	\$1.95
ELMT34	3/4"	\$2.89



Female Hose Elbow with Swivel

When there is no room to use a straight fitting to start a system.

ELFL	1/2"	\$1.71
ELFL34	3/4"	\$3.79



Cross

A 4-way fitting to attach mainline tubing and connect to multiple rows.

ELX	1/2"	\$3.59
ELX34	3/4"	\$8.95



Easy Loc Socket

Glues over PVC pipe of the same size or into larger slip fitting.

EL34S	1/2" x 3/4" PVC	\$1.09
EL34SPIG1	3/4" x 1" PVC	\$1.69
EL1SOC	1"	\$1.95



Spigot

These fittings will glue into a PVC fitting of the same size.

EL12S	1/2"	\$1.14
ELA34	3/4"	\$1.59
EL1SPIG1	1"	\$1.89

DRIP TAPE

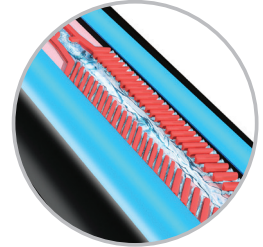


AQUA-TRAXX DRIP TAPE

GROWERS CHOICE

Aqua-Traxx Azul is the latest generation of tape technology from Toro. It features an innovative emitter design that protects the labyrinth from debris and maximizes clog resistance making it the perfect method of irrigating row crops and raised beds.

- Low-cost, effective watering for row crops and raised beds
- Superb watering efficiency and uniformity
- Ideal for above ground, mulched or buried applications
- Great for low-pressure systems, works down to 4 PSI
- Requires only 120 mesh filtration (filters, pp. 16, 17 and 18)
- Use with drip tape fittings (p. 11)
- Low operating pressures, see chart below (regulators, p. 19)
- Typically lasts up to 7 years if covered, and 2–5 years on surface



Part #	Mil	Emitter Spacing	Flow Type	Flow per 100' @ 8 PSI	Roll Length	Max Row Length	Price Each
15 Mil-Maximum Pressure 15 PSI							
TAZ1508HSR	15	8" OC	High	40 GPH	1,000'	200'	\$129.95
TAZ1508LSR	15	8" OC	Low	20 GPH	1,000'	380'	\$129.95
TAZ1508H	15	8" OC	High	40 GPH	4,000'	200'	\$339.95
TAZ1508L	15	8" OC	Low	20 GPH	4,000'	380'	\$339.95
TAZ1512H	15	12" OC	High	27 GPH	4,000'	280'	\$349.95
TAZ1512L	15	12" OC	Low	13 GPH	4,000'	550'	\$349.95
8 Mil-Maximum Pressure 15 PSI							
TAZ804SR	8	4" OC	Med	60 GPH	2,000'	140'	\$139.95
TAZ804	8	4" OC	Med	60 GPH	7,500'	140'	\$349.95
TAZ808H	8	8" OC	High	40 GPH	7,500'	200'	\$349.95
TAZ808L	8	8" OC	Low	20 GPH	7,500'	380'	\$349.95
6 Mil-Maximum Pressure 12 PSI							
TAZ606	6	6" OC	Low	27 GPH	10,000'	280'	\$379.95

DRIPWORKS DRIP TAPE

Packaged in a convenient, easy-to-store dispenser. The precision-designed flow path reduces clogging and the slit outlet prevents back suction of soil. To create a tight seal, be sure tape is warm and pliable before attaching the 5/8" start fittings (LSB/LSBSO) and end fittings (LSGS/LSPLUG).

- Superior clog resistance
- Works above ground, mulched or buried
- Use with 5/8" tape fittings
- Lasts years; lifespan considerably increased if tape is covered

Part #	Mil	Emitter Spacing	Flow Type	Roll Length	Price Each
TDE804100	8	4" OC	Medium	100'	\$18.95
TDE1508L100	15	8" OC	Low	100'	\$18.95
TDE1508H100	15	8" OC	High	100'	\$18.95



TOP QUALITY TAPE LOC FITTINGS



MAKE THE RIGHT CONNECTION

All of these easy-to-install fittings work with most brands of drip tape.



Tape x 1/4" Barb

For attaching tape to mainline tubing. Simply punch a 1/4" hole in the mainline tubing, connect the tape to the tape fitting end, and insert the barbed end into the punched hole. Allows a flow of approx. 80 GPH at 10 PSI.

LSB \$0.59



Tape x 1/2" Male Pipe Threads

When teeing off PVC or large poly pipe, use this for a high-flow, removable row beginning. Ideal for long runs.

LS12M \$0.89



Tape x 1/4" Barb with Valve

For shutting off individual lines. The 1/4" barb's flow is approx. 80 GPH at 10 PSI.

LSBSO \$2.29



Tape x Male Hose Thread

This fitting is used to connect a line of drip tape to female hose threads.

LSM \$0.82



Tape x Female Hose Swivel

For attaching tape to a hose or hose bib or any other male hose threads.

LSF \$1.89



Tape Elbow

For making sharp turns in a garden. Tape will not go around a 90° corner.

LSE \$2.19



Tape Coupler

For joining two sections of tape or repairing a line.

LSC \$0.89



Tape x Easy Loc

For attaching tape to the end of 1/2" mainline tubing.

LSELC \$1.65



Tape x 1/2" Male Pipe Thread with Valve

This fitting connects a line of drip tape to 1/2" female pipe threads (FPT). It also has a built-in shutoff valve to allow the line of drip tape to be manually turned off.

LSV12M \$2.29



Tape Coupler with Valve

The Tape Coupler with Valve can be used to create a shutoff anywhere in a line of drip tape. It can also be used as a repair coupler to patch two sections of drip tape together.

LSCSO \$2.29



Tape Tee

The Tape Loc Tee will branch a line of drip tape off of an existing line of drip tape. Simply cut the original line of tape and insert the Tape Tee fitting.

LST \$2.39



Tape x Male Hose End with Cap

This fitting is used to end a line. The screw-off cap makes it easy to flush lines.

LSMC \$1.29



Tape x PVC Adapter

For running tape directly off a PVC header. Glues onto 1/2" PVC pipe or into a 3/4" PVC fitting.

LSSOC \$1.09



Tape End Plug

This fitting is used to seal a row of tape. A loop on the end provides a sure grip for easy handling.

LSPLUG \$0.49



Tape Grip Sleeve End

The grip sleeve end is an economical way to end a line of drip tape.

LSGS-10 \$3.95/10

VERSATILE SOAKER DRIPLINE

Soaker Dripline is used in all of the garden beds at the DripWorks demonstration garden for row crops, containers, and ornamental plantings.



1/4" SOAKER DRIPLINE

Ideal for small and medium garden beds or containers

- Flexible, easy to use
- Emitters pre-installed every 6", 9", or 12"
- Great for gravity-fed systems, garden beds, containers, and border gardens
- Maximum operating pressure 30 PSI
- Works down to 2 PSI
- Uses standard 1/4" fittings (p. 13)

Part #	Roll Length	Price Each
6" Spacing		
DSD6L	50'	\$14.95
DSD6	100'	\$21.95
DSD6500	500'	\$102.95
9" Spacing		
DSD9	100'	\$19.95
DSD9500	500'	\$84.95
12" Spacing		
DSD12	100'	\$14.95
DSD12500	500'	\$71.95

Soaker Dripline Flow Per 100'				
Spacing	Max Row Length	Flow (GPH)		
		10 PSI	20 PSI	30 PSI
6"	18'	84	120	160
9"	25'	56	80	107
12"	34'	42	60	80
Flow per emitter:		0.42	0.60	0.80

To prevent runoff on clay soils, reduce row spacing and water more frequently for shorter durations.



Note: To ensure even flow, we recommend using a regulator with Soaker Dripline. See p. 19 for our 10–30 PSI regulators.



Miracle Insert Tool

A "must" for landscapers! Saves time and prevents sore hands when inserting goof plugs or transfer barbs into 1/4" tubing or Soaker Dripline. Not a punch.

PUINS..... \$24.95

1/4" MICRO-FITTINGS

These fittings are used with all standard 1/4" micro-tubing and Soaker Dripline. They are most frequently inserted into 1/2" and 3/4" mainline tubing using one of our punches.

Control your flow with one of our favorite 1/4" fittings



14VFV



14VFVT

Micro-Flow Valves

Make any mini-sprinkler or sprayer adjustable. Also use in place of transfer bars to control the flow to individual plants. Use barbed valve with 1/4" tubing and Soaker Dripline; threaded valve with Rigid Risers.

- 14VFV-5 Barbed Valve \$3.49/5
- 14VFV-20 Barbed Valve \$12.95/20
- 14VFV-50 Barbed Valve \$29.95/50
- 14VFVT-5 Threaded Valve \$3.49/5
- 14VFVT-50 Threaded Valve \$29.95/50

Transfer Barb

Our most common connector for attaching 1/4" tubing to mainline (1/2" or 3/4") tubing. Also acts as a coupler for joining two pieces of 1/4" tubing.

- 14TB-10 \$1.49/10
- 14TB-50 \$6.95/50

Long Transfer Barb

A long body and tapered ends make this 1/4" transfer barb easier to handle than the short barb.

- 14LTB-10 \$1.49/10
- 14LTB-50 \$6.29/50

Two-Way Goof Plugs *Most popular!*

A plug with two different-sized barbs used to repair small or large holes in mainline tubing. A must if you punch a hole in the wrong place or need to remove an emitter from your mainline tubing.

- 14GP2-10 \$0.60/10
- 14GP2-100 \$4.95/100

One-Way Goof Plugs

The same size plug as the small end of the 2-way Goof Plug. For patching a hole where a 1/8" or 1/4" barb was removed. Sits flat on the mainline tubing. Use to end a line of 1/4" tubing or Soaker Dripline.

- 14GP1-10 \$0.79/10
- 14GP1-100 \$5.95/100

Threaded Connector

Thread into mainline tubing to keep short Rigid Risers in an upright position. (10-32 threaded base.)

- 14WTTB-10 \$1.69/10
- 14WTTB-50 \$7.49/50

Cross

A four-way fitting for 1/4" tubing.

- 14X-10 \$3.95/10
- 14X-50 \$17.95/50



Elbow

Use anywhere you need tubing to turn a 90° angle.

- 1490-10 \$1.95/10
- 1490-50 \$7.95/50



Tee

For branching off 1/4" tubing.

- 14T-10 \$1.95/10
- 14T-50 \$7.95/50

Threaded Barb

Thread by barb connector. Used to connect Rigid Risers to mainline or 1/4" tubing. Can be used to connect 1/4" tubing to PVC. (10-32 threaded base.)

- 14WTBC-10 \$1.95/10
- 14WTBC-50 \$7.49/50



Female Hose Thread x 1/4" Fittings

Use these fittings to connect a single line of 1/4" poly tubing to the male hose threads on a faucet, filter, timer, or hose.

- H14CP With Screen Washer ... \$2.39



Bug Plug

When using 1/4" tubing on the outlet side of emitters, a Bug Plug at the end allows water to flow out but keeps bugs from getting in and clogging lines. Not for regulating flow!

- 14BUG-10 \$1.39/10



14RTB

18T

18TB

1/8" MICRO-FITTINGS

For installing Spot Spitters. Use a length of 1/8" tubing and a 1/8" transfer barb (18TB) or a reducing transfer barb (14RTB) to connect the emitter to the mainline tubing. Find our Spot Spitters at Dripworks.com.

- 18TB-10 1/8" Transfer Barb \$1.49/10
- 18TB-50 1/8" Transfer Barb \$6.49/50
- 14RTB-10 1/4" x 1/8" Transfer Barb \$2.39/10
- 14RTB-50 1/4" x 1/8" Transfer Barb \$9.95/50
- 18T-10 1/8" Tee \$1.95/10
- 18T-50 1/8" Tee \$8.95/50

SPECIALTY HOLE PUNCHES & CUTTERS

The tools you need to easily create holes or make quick work of cutting tubes to length.



BEST SELLER!

Miracle Punch: "The Ultimate Punch"

This punch works like a staple gun. Slip the 1/2" or 3/4" tubing completely into the channel and squeeze the handle. Makes a big job much easier. Popular with landscapers and commercial growers.

PUM Regular 1/4" Punch . . . \$14.95
PUMK Large Hole Punch* . . . \$14.95

*For larger emitters such as Vibra-Clean, online at Dripworks.com



Punch N' Cut

Multi-purpose tool will punch a 1/4" hole. Use with any size polyethylene mainline. Cutting tool will cut mainline tubing and PVC schedule 40 up to 1". One tool does it all.

PUPCUT \$15.95



Pocket Punch

Will easily punch holes for 1/4" fittings or emitters into 1/2" mainline tubing. Has a holder to help when installing transfer barbs or certain emitters.

PUPKT \$8.95



Netafim 1/4" Plastic Handle Punch

The Netafim 1/4" Plastic Handle Punch Tool is available to assist in making the right size hole for the TechFlow Emitters.

MTUBEPPUN \$22.95



Purple Handle Punch

This is a punch with a comfortable, ergonomic handle. It is easy to use and makes a clean hole. Use for 1/4" fittings and 3/8" tape fittings. This punch has a hardened steel tip and can be sharpened with a grinding wheel.

PUPUR \$9.95



Tubing Cutter by Hydro-Rain

This tool is for cutting polyethylene tubing up to 1 1/4". Its sharp blade can also cut rubber and plastic pipe!

POLYCUT▲ \$15.95



Orange Handle Punch

Use to make a hole for 1/4" fittings and Tape x 1/4" barb fittings (LSB or LSBO). Use other end to help insert Mini-Jets into 1/4" poly tubing.

PUO \$9.95



Adjustable Punch

Adjustable tubing guide accepts 1/2", 3/4" polyethylene tubing and 1" or 1 1/2" Oval Hose. Includes large tip (PUADJTLG) for making holes slightly larger than standard 1/4" size (LSB, LSBSO, and EL14B fittings). Standard 1/4" tip (PUADJTSM) available at Dripworks.com.

PUADJ* \$24.95

*Adjustable Punch tool may vary in color.



Spagetti Stickler

The Spagetti Stickler is the only tool you will need for drip irrigation installations. Use the tip to make precise 1/4" holes, for inserting emitters and 1/4" and 1/8" transfer barbs.

PUS \$12.95

Find the right punch tool for the work you need to do at DRIPWORKS.COM



MICRO TUBING LINE FOR EVERY NEED

Stock up on micro tubing in the sizes and materials you reach for most often. Available in rolls of various lengths and flow rates for all your system requirements. Simply insert fittings and emitters into the end. No clamps needed.



1/8" Polyethylene

(.125" ID-.187" OD)
Flow 15 GPH 30 PSI Max.

18100	100' Roll	\$5.95
18500	500' Roll	\$24.95
181000	1,000' Roll	\$39.95



1/4" Polyethylene

(.170" ID-.250" OD) This is the standard 1/4" tubing used with most emitters, mini-sprinklers, and sprayers. Flow 30 GPH 30 PSI Max.

1450	50' Roll	\$4.95
14100	100' Roll	\$7.95
14500	500' Roll	\$34.95
141000	1,000' Roll	\$64.95



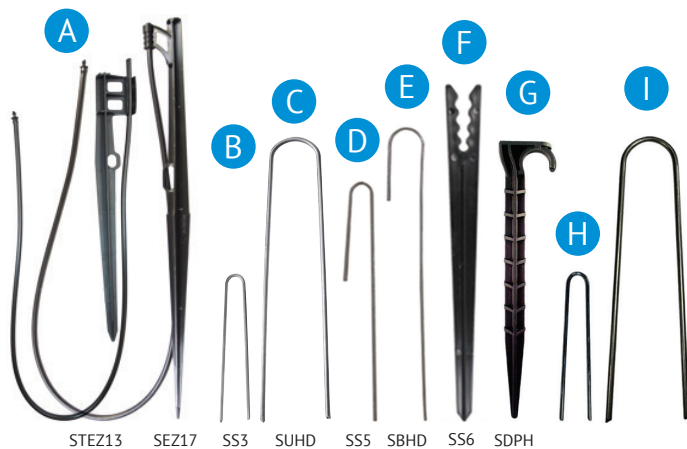
1/4" Vinyl

(.160" ID-.220" OD) Softer and more flexible than polyethylene. Do not use at high pressure. Flow 30 GPH 30 PSI Max.

1450V	50' Roll	\$5.95
14100V	100' Roll	\$8.95
141000V	1,000' Roll	\$66.95

KEEP YOUR SYSTEM IN PLACE

Stakes keep your tubing elevated and hold downs keep it in place.



E. J-Shaped Wire Hold Downs

For 1/2" mainline or drip tape, these 7" stakes are easy to use.

SBHD-10	\$2.49/10
SBHD-100	\$16.95/100

F. 6" Support Stake

For 1/4" and 1/8" tubing. Stakes elevate and hold micro-tubing, keep bugs and dirt out of tubing and raise emitters for easy inspection.

SS6-10	\$2.49/10
SS6-50	\$9.95/50

G. Plastic Hold Down

This 6 1/2" plastic stake is designed to hold 1/2" tubing in place. The flat top can be hammered into the ground.

SDPH-5	\$1.95/5
--------	-------	----------

H. Stainless Steel 3" Hold Down

These hold-downs can secure landscape 1/4" tubing and 1/4" soaker dripline and are ideal for any soil type.

SNK3SS-10	\$3.45/10
SNK3SS-100	\$19.45/100

I. Stainless Steel 6" U Shaped Staple

These staples are made with chisel-point ends and thick eight-gauge heavy-duty steel, these staples are ideal for installing into hard rocky soil without bending.

SNK6SS-10	\$3.75/10
SNK6SS-100	\$37.95/100

Support Clamps With Nails

Plastic clamps with stainless steel nails for attaching 1/4" or 1/2" tubing to wood surfaces.

S14SC-10	Clamps for 1/4" Tubing	... \$1.69/10
S14SC-50	Clamps for 1/4" Tubing	... \$6.95/50
S12SC-10	Clamps for 1/2" Tubing	... \$3.69/10
S12SC-50	Clamps for 1/2" Tubing	... \$14.95/50



A. EZ Stake

A clip stake with 3' of heavy-wall vinyl 1/4" tubing and transfer barb attached. Just add a sprayer or mister.

STEZ13-5	13" EZ Stake	\$4.75/5
SEZ17-5	17" EZ Stake	\$7.95/5

B. 3" Hold Down

A U-shaped stake to keep 1/4" tubing and emitters in place.

SS3-10	\$2.49/10
SS3-100	\$13.95/100

C. U-Shaped Wire Hold Downs

Stronger than the SBHD, these 6" galvanized hold downs work well in light or heavy soils. For 1/2" and 3/4" tubing.

SUHD-10	\$2.49/10
SUHD-100	\$16.95/100

D. 5" Hold Down

A J-shaped stake to keep emitters and 1/4" tubing in place.

SS5-10	\$2.49/10
SS5-100	\$13.95/100

GARDEN FILTERS

Screen filters remove sediment and debris that can clog a drip system. These Home Garden Screen Filters are commonly used for small to medium size irrigation systems with a relatively clean water supply.

FILTRATION COMPARISON CHART

Mesh	Micron	Sand #
50	280	N/A
100	152	11
150	104	16
200	73	20

There are two common terms used to rate filtering capability. The first is *mesh*, the number of wires per inch. The second is *micron*, the maximum particle size that can pass through. As mesh size increases, micron size decreases.

Browse our full selection of filters at DRIPWORKS.COM



irritec

A. Irritec Hose Thread Y Filters

These home garden filters attach directly to the male hose threads on a faucet, garden hose or timer. Not rated for use under constant pressure. Must be placed after automated timers or valves. Max pressure is 120 PSI. With Stainless Steel Screen/Drain Valve.

- FYCH 155 Mesh, 20 GPM \$13.95
- FYCH200 200 Mesh, 20 GPM \$13.95

B. Male Pipe Thread Y Filter

These home garden filters attach to female pipe threads. Not rated for use under constant pressure. Must be placed after automated timers or valves. Max pressure is 120 PSI. Use drain valve to flush debris from basin. With Stainless Steel Screen/Drain Valve.

- FYCP34155 ¾" MPT 155 Mesh, 20 GPM..... \$13.95
- FYCP34200 ¾" MPT 200 Mesh, 20 GPM..... \$13.95
- FYCP1155 1" MPT 155 Mesh, 20 GPM..... \$13.95
- FYCP1200 1" MPT 200 Mesh, 20 GPM..... \$13.95

C. Tee Filter

Use for smaller systems with clean water (9 GPM or less, up to 80 PSI). FHT swivel inlet x MHT outlet. To clean the stainless steel screen, just remove the hose cap and pull it out.

- FT 150 Mesh Tee Filter \$11.95
- FT200 200 Mesh Tee Filter \$11.95

[Screen replacements available online!](#)





SUPER-SIZED FILTERS

Amiad has a reputation for making some of the best-engineered filters in the world, featuring stainless steel screens and male pipe threads (MPT) on the inlet and outlet. These large filters are designed to handle the constant (static) pressure of being installed before automated timers and valves. Great for debris and sediment.

Shop for replacement screens at DRIPWORKS.COM

AMIAD® 2" SUPER "T"

Constant pressure filters with a double-size screen (108 sq. in.) for twice the filtering area.

- Max Flow: 110 GPM
- Max Pressure: 145 PSI

FAM2ST155 155 Mesh . . . \$379.95
 FAM2ST200 200 Mesh . . . \$379.95



STANDARD AMIAD FILTERS

Heavily reinforced frame handles pressures to 140 PSI.
 Note: Amiad Standard 1" and 1½" use the same size screens.

Part #	Filter Size (MPT)	Mesh	GPM	Filter Area Sq. In.	Price
FAM34	¾"	155	13	17	\$34.95
FAM34200	¾"	200	13	17	\$34.95
FAM1	1"	155	30	26	\$84.95
FAM1200	1"	200	30	26	\$84.95
FAM112	1½"	155	66	26	\$109.95
FAM112200	1½"	200	66	26	\$109.95
FAM112SU	1½"	155	66	52	\$149.95
FAM112SU2	1½"	200	66	52	\$149.95

AMIAD TAGLINE FILTERS

Lower-cost alternative can handle pressures to 110 PSI.
 Note: ¾" and 1" Amiad Tagline Filters both use ¾" Amiad Screens. 1½" Amiad Tagline Filters use 1½" Amiad Super Screens.

Part #	Filter Size (MPT)	Mesh	GPM	Filter Area Sq. In.	Price
FAMCP34	¾"	155	13	17	\$19.95
FAMCP34200	¾"	200	13	17	\$19.95
FAMCP1	1"	200	22	17	\$25.95
FAMCP112	1½"	155	66	52	\$98.95
FAMCP112200	1½"	200	66	52	\$98.95
FAMCP2155	2"	155	110	72	\$179.95
FAMCP2200	2"	200	110	72	\$179.95



ARKAL DISC FILTERS

One of the finest disc filters on the market. If you have organic matter such as algae in your water supply (pond, creek, lake, river), this is the answer! The stacked discs in the Arkal filter are more durable and easier to clean than screens or cartridges. Discs must be removed from the filter body for cleaning. Maximum pressure is 140 PSI. Not for sediment.



ARKAL SUPER DISC FILTERS

Designed for larger drip systems or where the water has more algae or other organic debris. The disc set is almost twice the size of a standard Arkal filter, providing a much larger filtering capacity and a higher flow. Maximum pressure 140 PSI. Not for sediment.

Part #	Filter Size (MPT)	Mesh	GPM	Filter Area Sq. In.	Price
FA34	¾"	140	12	24.8	\$37.95
FA1	1"	140	26	48.9	\$109.95
FA1200	1"	200	26	48.9	\$109.95
FA112140	1½"	140	35	48.9	\$156.95
FA112200	1½"	200	35	48.9	\$156.95

Part #	Filter Size (MPT)	Mesh	GPM	Filter Area Sq. In.	Price
FA1140SUP	1"	140	35	86.5	\$159.95
FA1200SUP	1"	200	35	86.5	\$159.95
FA112140SU	1½"	140	52	86.5	\$199.95
FA112200SU	1½"	200	52	86.5	\$199.95

The ¾" Arkal is not available in 200 Mesh.



ARKAL 2" DUAL LITE DISC FILTERS

Substantially larger than any of our other screen or disc filters. The filtering area is almost twice as large as the Arkal 1½" filter. Not for sediment.

- Max Pressure: 116 PSI
- Length: 16 5/16" Width: 10¼"
- Weight: 6.6 lb.
- Distance between inlet and outlet: 10¼"

Part #	Filter Size (MPT)	Mesh	GPM	Filter Area Sq. In.	Price
FADL2140	2"	140	110	147	\$295.95
FADL2200	2"	200	110	147	\$295.95

When it's time to replace your filter disc, find yours at DRIPWORKS.COM





PRESSURE REGULATORS

A regulator reduces incoming water pressure (PSI) that is too high for drip systems. Regulators (except the Senninger Limit Valve) must be placed downstream of valves or timers to prevent damage from constant pressure.

BEST SELLER!



Senninger Garden Regulators

Our best-selling regulator. It is ideal for low-volume drip systems. Impact-resistant body (3½" long). FHT x MHT for use with Tee filters, Inline filters or Hose Threaded Y filters. Flow range is 0.5–7 GPM.

PRSG10	10 PSI, 90°	\$9.95
PRSG20	20 PSI, 100°	\$9.95
PRSG30	30 PSI, 110°	\$9.95
PRSG40	40 PSI, 120°	\$9.95

LOW FLOW (0.5–8 GPM)



Hose Thread x Hose Thread

FHT x MHT for use with Tee filters, Inline filters or Hose threaded Y filters (p. 16).

PRSLHH12	12 PSI, 90°	\$12.95
PRSLHH20	20 PSI, 100°	\$12.95
PRSLHH30	30 PSI, 110°	\$12.95



Pipe Thread x Hose Thread

¾" FPT x MHT for use with pipe threaded Y filters.

PRSLPH12	12 PSI, 90°	\$12.95
----------	-------------	-------	---------



Pipe Thread x Pipe Thread

¾" FPT x ¾" FPT for use with pipe threaded Y filters.

PR12	12 PSI, 90°	\$11.95
PR20	20 PSI, 100°	\$11.95

HIGH FLOW (10–32 GPM)



Pipe Thread x Pipe Thread

1¼" FPT x 1" FPT

PRSH10	10 PSI, 90°	\$29.95
PRSH30	30 PSI, 110°	\$29.95

MEDIUM FLOW (2–20 GPM)



Pipe Thread x Pipe Thread

¾" FPT x ¾" FPT

PRSMPP12	12 PSI, 90°	\$14.95
PRSMPP20	20 PSI, 100°	\$14.95
PRSMPP30	30 PSI, 110°	\$14.95
PRSMPP40	40 PSI, 120°	\$14.95



Pipe Thread x Hose Thread

¾" FPT x MHT

PRSMPPH12	12 PSI, 90°	\$14.95
PRSMPPH30	30 PSI, 110°	\$14.95



Pipe Thread x Pipe Thread

1" FPT x 1" FPT

PR1S12	12 PSI, 90°	\$15.95
PR1S25	25 PSI, 105°	\$15.95
PR1S40	40 PSI, 120°	\$15.95

CONSTANT PRESSURE



Senninger Limit Valves

Use these constant pressure regulators before timers, valves, and shutoffs to reduce line pressure and extend the life of the system. Maximum inlet pressure is 125 PSI. Flow range is 0.5–18 GPM. FPT x FPT.

PRLV10	10 PSI, ¾"	\$24.95
PRLV20	20 PSI, ¾"	\$24.95
PRLV30	30 PSI, ¾"	\$24.95
PRLV40	40 PSI, ¾"	\$24.95
PR1LV30	30 PSI, 1"	\$24.95

Note: When system is not operating, a 30 PSI Limit Valve will allow up to 45 PSI in the system.

Click to chat about choosing the right regulator at DRIPWORKS.COM

FPT = Female Pipe Threads, FHT = Female Hose Threads, MPT = Male Pipe Threads, MHT = Male Hose Threads
 *Amount of incoming static pressure the regulator can handle.

EXTENSION HOSES, SHUTOFFS, SPLITTERS, AND QUICK CONNECTS

Customize your drip irrigation system with high quality accessories.



High Pressure Extension Hose

When a valve assembly is so large that it stresses a hose bib, lower it to the ground with a high-pressure extension hose. Designed for constant pressure. FHT x MHT brass ends. Maximum operating pressure of 150 PSI.

- HPEX3▲ 3' Extension Hose. . . . \$18.95
- HPEX5▲ 5' Extension Hose. . . . \$23.95



Hose Saver – Timer Saver

Protect your timer by installing this 8" high-pressure hose between your faucet and timer. Designed for constant pressure.

- HPSAV▲ \$13.95



Vacuum Breaker

A vacuum breaker prevents contamination of your home water supply. Check locally for building codes and backflow requirements in your area.

- FAVBH Plastic, FHT x MHT. \$2.95
- FBFP Solid Brass, FHT x MHT. . . \$10.90



Check Valve

Description: One way check valves keep the water in a drip system from flowing back into your home water supply. They can also be installed on a downward slope to prevent water from draining back down and over watering lower areas.

- VPCK 3/4" FPT \$16.95



Female Hose Plug

Protect your drip system from dirt and bugs when it is disconnected from the water source.

- HPLUG▲ \$1.49



3-Way PVC Splitter

A 3/4" PVC splitter with brass swivel made by DripWorks for use with multiple timers. Use with hose extension above.

- HSPL3▲ 3-Way Splitter. \$14.95
- HSPL3SO▲ 3-Way Splitter with 3 HSO Shutoffs. \$19.95



Brass 4-Way Splitter

A heavy duty brass splitter with built-in valves and hose swivel. Use with hose extension on left.

- HSPL4B▲ \$29.95



Hose Y with Valves

Run two drip systems (with or without timers) from one faucet or leave one outlet available for a garden hose.

- HYV Plastic. \$3.29
- HYVBR▲ Brass with Swivel. . . . \$12.95
- HYVHI▲ Brass Full Port Hose Y with Swivel \$23.95

Gilmour



High-Flow Hose Fittings

Heavy-duty, full-port hose fittings allow for a higher flow at a lower price than the brass above. These have easy-to-grip shutoff handles and female swivel inlets.

- HSOHPL Hose Shutoff (Plastic) \$6.95
- HSOAL▲ Hose Shutoff (Aluminum) \$10.95
- HYVHPL Hose Y (Plastic) \$8.95
- HYVAL▲ Hose Y (Aluminum) . . . \$13.95

EASY CONVERSION: SPRINKLER TO DRIP SYSTEM FITTING

This fitting has a 1/2" FPT inlet to convert lawn sprinkler risers to a drip system.



1/2" FPT x Male Hose Elbow (with Shutoff)

To start a drip system; attach a hose threaded filter (p. 16), then a female hose start (ELFH, p. 9).

- RLSO▲ \$3.79



FIND THE RIGHT ASSEMBLY FOR THE JOB

When attaching fittings to your faucet to start your drip system, the order of assembly is important. Adapters may be used to connect pipe threaded components to hose threads. Use a high pressure hose extension when connecting the assembly to the faucet. Timers should not rest directly on the ground.

Seeing is understanding: browse our assembly diagrams at DRIPWORKS.COM

MAKE THE RIGHT CONNECTION WITH HOSE TO PIPE ADAPTERS

Not all components in a system have the same type and size of threads. Use these fittings to connect unlike threads. Add thread sealant tape on pipe-threaded connections to prevent leaks. Note: Hose threads are always uniform in size.

	<p>Female Hose x 3/4" Female Pipe AFHFP▲ Dura PVC Swivel.....\$3.45 AFHFPBS▲ Brass Swivel.....\$4.95</p>		<p>Male Hose x Male Hose AMHMH▲ Plastic.....\$1.29 AMHMHBS▲ Solid Brass.....\$4.49</p>
	<p>Male Hose x 3/4" Male Pipe AMHMP▲ Polypropylene.....\$0.59 AMHMPBS▲ Solid Brass.....\$4.49</p>		<p>Male Hose x 3/4" Female Pipe AFPMH▲ PVC.....\$1.79 AFPMHBS▲ Solid Brass.....\$3.95</p>
	<p>Female Hose x 3/4" Male Pipe AFHMP▲ Dura PVC Swivel.....\$3.45 AFHMPBS▲ Solid Brass.....\$4.49</p>		<p>PVC Glue-In x Hose End We carry both female and male hose ends for PVC pipe. AFHI and AMHI fittings will glue onto 1/2" PVC pipe or into 3/4" PVC slip fittings (see pp. 44, 45). AFHI Female Hose Swivel...\$1.79 AMHI Male Hose.....\$1.29 AMHI12* 1/2" x Male Hose.....\$0.99 *Glues into 1/2" PVC fitting.</p>
	<p>Female Hose x Female Hose AFHFH▲ Dura PVC Swivel.....\$3.95 AFHFHBS▲ Brass Swivel.....\$4.95</p>		



GardenBee
BY DRIPWORKS

NEW GARDENBEE TOOLS!



GardenBee Stainless Steel Transplanter

Ideal for transplanting seedlings, sowing, planting bulbs, and weeding. It has a pointed tip with a narrow-tapered design and includes measurements in centimeters and inches, ensuring you plant at the perfect depth every time. Its made with quality stainless steel and wood handle. Won't rust, providing a long-lasting tool for many seasons. Measures 13" long including the 5" handle.

GBTRAN \$12.95



GardenBee Stainless Steel Scoop

Can remove and mix soil and compost. The design will keep your soil, fertilizer, and compost from falling out as you work. The stainless-steel finish and wood handle design make this tool durable and highly rust-resistant. Use the cord for easy storage. Work fast with no spills!

GBTSCOOP \$12.95



GardenBee Aluminum Dibbler

A must-have tool for any Garden! Use the 12" GardenBee Dibbler with blue handle to plant flower bulbs, onion, and garlic bulbs effortlessly. The solid aluminum construction and comfortable handle will reduce stress on your hands, allowing you to enjoy your garden. The 1" to 6" depth indicator marks on the tip make it easy to plant at the correct depth. Use this garden tool to assist you with all your planting needs this season.

GBTDIBBLU \$12.95
GBTDIBGRN \$12.95



GardenBee Stainless Steel Dibbler

Excellent tool for sowing and seedling. It is a great tool for planting seeds, seedlings, or bulbs. Great for puncturing the ground to make deep holes. The dibbler features a stainless-steel head, wood handle, and cord for easy storage. Easily dig into the soil without bending or breaking.

GBTDIBSS \$12.95



GardenBee Stainless Steel Hand Trowel

This trowel is ideal for planting, digging, cultivating, and aerating. The trowel features a large scoop shovel and solid stainless-steel construction with a wood handle and strap. The Stainless Steel won't rust, ensuring a long-lasting tool for many seasons. Measures 13" long including the 5" handle.

GBTROWEL \$12.95



GardenBee Tote Bag

A great addition to your garden or home! This bag can be used as a gardening tote or a universal home storage organizer. The tote bag is water- and soil-resistant and large enough to carry and store tools safely. It can store various gardening tools and is easy to carry. It has several pockets outside that can hold small tools. It is made of durable, resistant, and quality material.

GBTOTE \$23.95



GardenBee Stainless Steel Weeder

Effectively removes weeds from your garden. The stainless steel and wood handle design make this tool durable and reliable. Get the job done fast with our garden tools!

GBTWEED \$12.95



GardenBee Kid Garden Tool Kit

Introduce gardening to the little ones in your family with The Gardening Tool Set kit from GardenBee. The kit includes three tools, a watering can, and a tote bag.

AHG88R \$14.95

EFFECTIVE DRIP EMITTERS

Low pressure? Uneven plant spacing? Dirty water? Check out these low-cost, non-pressure compensating emitters. We recommend using a 20 PSI pressure regulator or lower (p. 19) with these emitters.

GROWERS CHOICE

NON-PLUGGING EMITTER



Great for Compost Tea!

If your water supply is very dirty (pond or irrigation ditch) and fine screen filters clog quickly, this is the answer. First use a coarse, 30–50 mesh screen filter to capture large particles. Then use these Non-Plugging Emitters, which pass particles that would plug up most other emitters. A minimum of 15 PSI is required for these emitters to work properly. Not an inline emitter. Use at the end of ¼" tubing or install directly into mainline. Flow at 20 PSI.

DNP1-10	1 GPH	\$9.95/10	...	\$89.95/100
DNP2-10	2 GPH	\$9.95/10	...	\$89.95/100
DNP3-10	3 GPH	\$9.95/10	...	\$89.95/100
DNP6-10	6 GPH	\$9.95/10	...	\$89.95/100



POT DRIPPER

This is a basic container dripper with a 2" hold down stake and a threaded inlet. Note: A ¼" Transfer Barb (14TB, p. 15) and ¼" tubing are needed to connect this emitter to the mainline. Pot Drippers may also be used with 1/8" tubing and fittings (pp. 13, 15). Flow at 15 PSI.

DPOT12-10	½ GPH (red)	\$3.95/10	...	\$31.95/100
DPOT1-10	1 GPH (black)	\$3.95/10	...	\$31.95/100

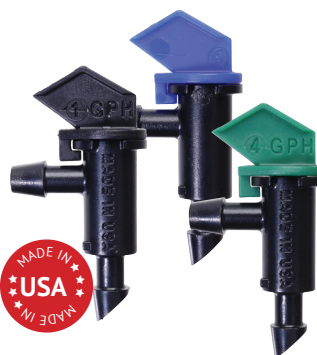


INLINE EMITTER

Use with ¼" tubing to make your own inline emitter tubing. Can also be added into existing ¼" lines at any time. Perfect for unevenly spaced plants. For larger plants, just add more emitters. To use, cut tubing where you want an emitter and insert the barbed ends. Use a goof plug (p. 13) to end the line. Flow at 15 PSI.

DTMIL12-10	½ GPH (red)	\$2.95/10
DTMIL12-50	½ GPH (red)	\$11.95/50
DTMIL1-10	1 GPH (black)	\$2.95/10
DTMIL1-50	1 GPH (black)	\$11.95/50
DTMIL2-10	2 GPH (green)	\$2.95/10
DTMIL2-50	2 GPH (green)	\$11.95/50

Note: ¼" tubing has a maximum flow of about 30 GPH. Do not put too many emitters on any ¼" line.



TAKE-APART EMITTER

Take-Apart Emitters have a locking cap that can be removed for cleaning. The beveled barb end is the inlet and the flag end is the outlet. These emitters are great for low-pressure systems. Works down to 4 PSI. Flow at 15 PSI.

DTA1-10	1 GPH (black)	\$2.49/10
DTA1-50	1 GPH (black)	\$10.95/50
DTA1-100	1 GPH (black)	\$19.95/100
DTA2-10	2 GPH (blue)	\$2.49/10
DTA2-50	2 GPH (blue)	\$10.95/50
DTA2-100	2 GPH (blue)	\$19.95/100
DTA4-10	4 GPH (green)	\$2.49/10
DTA4-50	4 GPH (green)	\$10.95/50
DTA4-100	4 GPH (green)	\$19.95/100

Note: The flag end is the outlet.

PRECISE WATERING



THE PRODUCT OF CHOICE IN THE RUGGED VINEYARDS OF NORTHERN CALIFORNIA



BEST SELLER!

Woodpecker PC

The heavy-duty PC emitter! The rubber diaphragm is the largest available and the least likely to plug. ¼" inlet and outlet. Pressure range of 15–50 PSI.

DNPC12-25	½ GPH (red)	\$15.95/25
DNPC12-100	½ GPH (red)	\$54.95/100
DNPC1-25	1 GPH (black)	\$15.95/25
DNPC1-100	1 GPH (black)	\$54.95/100
DNPC2-25	2 GPH (green)	\$15.95/25
DNPC2-100	2 GPH (green)	\$54.95/100
DNPC6-25	6 GPH (orange)	\$15.95/25
DNPC6-100	6 GPH (orange)	\$54.95/100
WPBC-25	Bug Cap (allows flow)	\$5.95/25
DNPCAP-10	Shutoff Cap	\$3.95/10



Woodpecker Jr. PC

A versatile emitter for landscapes, greenhouses, orchards, and backyard gardens. One unique feature is that it won't begin to emit water until the entire system reaches 7 pounds of pressure (PSI). This is great for greenhouses where even watering is necessary or hillside plantings at different elevations. ¼" inlet and outlet. Pressure range of 10–50 PSI.

DNJR12-25	½ GPH (red)	\$11.95/25
DNJR12-100	½ GPH (red)	\$42.95/100
DNJR1-25	1 GPH (gray)	\$11.95/25
DNJR1-100	1 GPH (gray)	\$42.95/100
DNJR2-25	2 GPH (green)	\$11.95/25
DNJR2-100	2 GPH (green)	\$42.95/100



Self-Piercing Emitters

The Netafim Self-Piercing Emitters is ideal for planter boxes, hanging baskets, trees, shrubs, and flower boxes. Install on surface or subsurface. Easy to install, no tools required. Pressure Range 10.15-58 PSI

SPCV10-25	1 GPH (black)	\$11.95/25
SPCV10-100	1 GPH (black)	\$35.95/100
SPCV20-25	2 GPH (red)	\$11.95/25
SPCV20-100	2 GPH (red)	\$35.95/100

Pressure compensating emitters are ideal for achieving even water distribution when your drip irrigation system runs extensive distances such as planting in long rows or when you're dealing with uneven or hilly terrain.



COBRA STAKE DRIP EMITTERS

A landscape spike dripper that delivers precise amounts of water directly to the root zone. Requires a length of ¼" tubing and a transfer barb (p. 13) to connect emitter to mainline tubing. Used in nurseries, root stock, and landscape applications. Self flushing, use as a PC pot dripper. Stake length of 5 inches. Pressure range of 15-45 PSI.

DCOB12-5	½ GPH (red)	\$3.49/5
DCOB12-100	½ GPH (red)	\$49.95/100
DCOB1-5	1 GPH (black)	\$3.49/5
DCOB1-100	1 GPH (black)	\$49.95/100
DCOB2-5	2 GPH (green)	\$3.49/5
DCOB2-100	2 GPH (green)	\$49.95/100



PINCH DRIP EMITTERS

This self flushing emitter lies almost flat on the mainline tubing so it is not easily damaged. Designed for easy finger/thumb installation. ¼" barbed inlet and ¼" nipple outlet. Pressure range of 15-45 PSI.

DPCH12-10	½ GPH (red)	\$3.79/10
DPCH12-100	½ GPH (red)	\$29.95/100
DPCH1-10	1 GPH (black)	\$3.79/10
DPCH1-100	1 GPH (black)	\$29.95/100
DPCH2-10	2 GPH (green)	\$3.79/10
DPCH2-100	2 GPH (green)	\$29.95/100



CETA PC EMITTERS ON A STAKE

Available for either inline or end of line installation. Take apart for easy cleaning. Pressure range of 10-50 PSI.

DCSTK-10	1 GPH End of Line . .	\$8.95/10
DCSTK -100	1 GPH End of Line . .	\$75.95/100
DCIL-10	1 GPH Inline	\$8.95/10
DCIL-100	1 GPH Inline	\$75.95/100



CETA PC EMITTERS

These self flushing PC emitters have a ¼" barb on both inlet and outlet. Take apart for easy cleaning. Pressure range of 15-45 PSI.

DC12PC-10	½ GPH (red)	\$3.95/10
DC12PC-100	½ GPH (red)	\$32.95/100
DC1PC-10	1 GPH (black)	\$3.95/10
DC1PC-100	1 GPH (black)	\$32.95/100
DC2PC-10	2 GPH (green)	\$3.95/10
DC2PC-100	2 GPH (green)	\$32.95/100

**What's the best emitter for your needs?
Find out at DRIPWORKS.COM**

JOIN OUR COMMUNITY

You're invited to follow us on Facebook, YouTube, Instagram, and Pinterest. In addition to enjoying exclusive offers, it's a great way to share how you used DripWorks products to complete your farm or garden project and to check out what other community members are doing. We are only satisfied when you are successful.

@DripWorksUSA    



FOUR EASY WAYS TO ORDER

1. **ONLINE** at Dripworks.com
2. **CALL** us toll free at 800.522.3747

March–June 30	July–Feb 28
Mon.–Fri. 7 am–5 pm PST	Mon.–Fri. 8 am–4 pm PST
Closed Sat. and Sun.	Closed Sat. and Sun.
3. **FAX** 707.459.9645
4. **VISIT** our retail store and demo garden
190 Sanhedrin Circle, Willits, CA 95490
Store hours Mon.–Fri. 9 am–4 pm PST

SHIPPING & DELIVERY

We typically ship orders within 24 hours. We will notify you if an item is back-ordered.

Shipping Options:

1. Ground Delivery Service

Normal transit time is from 1 to 7 business days, depending on delivery location. Applies to in-stock items only.

2. Next Day Delivery

Call By 1 pm Pacific Time. We offer Next Day, 2nd Day, and 3-Day Select. Call for rates. Expedited rates will be calculated for online orders.

RETURNS

DripWorks 30-Day Money Back Guarantee

Not happy with your item for any reason? Items may be returned or exchanged as follows (reimbursement does not include original shipping and handling charges):

Returns within 30 days: All items must be in their original packaging. Return shipping is the responsibility of the purchaser. Please inspect your entire order within 48 hours upon delivery and call us with any questions at 800.522.3747.

Returns from 31-60 days: New, unused, unopened items in their original packaging will be charged a 20% restocking fee.

Returns from 61-90 days: New, unused, unopened items in their original packaging will be charged a 30% restocking fee.

Returns after 90 days: Unfortunately, we cannot refund or exchange items after 90 days.

For information on our return policies regarding Special or Custom orders, kits, drop-shipped items, defective items, or undeliverable/unclaimed packages, please visit:
Dripworks.com/returns for details.

For instructions on returning or exchanging your item(s), please visit:
Dripworks.com/returns.

Prices are subject to change.

Email: support@Dripworks.com

Wholesale Pricing Available Online!

Log into Dripworks.com to view pricing and to register for a Pro Member Account



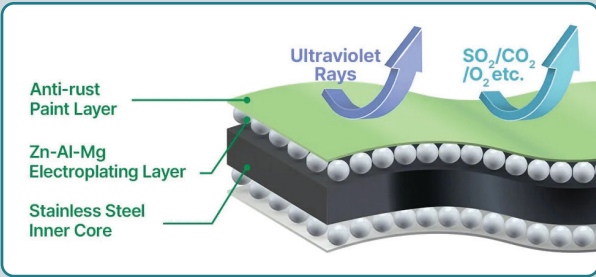
GardenBee
BY DRIPWORKS

GARDENBEE RAISED BEDS

GardenBee's Raised Metal Beds are ideal for any size garden!



LONG SERVICE LIFE



- Durable and long lasting
- Innovative modular design
- Designed for optimal plant growth
- Corrosion Resistant

17" HIGH RAISED GARDEN BEDS, METAL

78"x24"

HG7986-4-G	Green	\$139.95
HG7986-4-W	White	\$139.95
HG7986-4-E	Grey	\$139.95

96"x24"

HG7986-5-G	Green	\$159.95
HG7986-5-W	White	\$159.95
HG7986-5-E	Grey	\$159.95

42" Round

HG7986-1-G	Green	\$99.95
HG7986-1-W	White	\$99.95
HG7986-1-E	Grey	\$99.95

32" HIGH RAISED GARDEN BEDS, METAL

78"x24"

HG7987-4-G	Green	\$209.95
HG7987-4-W	White	\$209.95
HG7987-4-E	Grey	\$209.95

96"x24"

HG7987-5-G	Green	\$229.95
HG7987-5-W	White	\$229.95
HG7987-5-E	Grey	\$229.95

42" Round

HG7987-1-G	Green	\$169.95
HG7987-1-W	White	\$169.95
HG7987-1-E	Grey	\$169.95

See our complete selection of garden tools and planters at Dripworks.com

HIGH VOLUME WATERING

When a larger amount of water is necessary for fast-growing, thirsty plants, or a big flower garden or ground cover, these sprayers will emit a higher amount of water than drippers.



Explore our video library to see these products in action at DRIPWORKS.COM



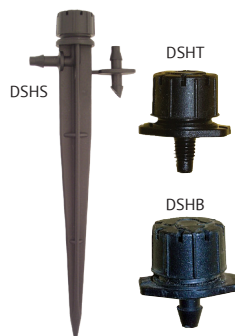
PRESSURE COMPENSATING SHRUBBLERS

Gentle flow action with uniform coverage for all emitters on the same supply line. Considered partially pressure compensating, as there is some variation due to pressure. See chart below.

- Pre-set flow rate
- Take apart for easy cleaning
- Colored cap for identification
- Pressure range 15–45 PSI

- DSHPCB-5 Barbed Base \$3.29/5
- DSHPCB-100 Barbed Base \$49.95/100
- DSHPCS-5 5" Stake \$5.49/5
- DSHPCS-100 5" Stake \$79.95/100

Flow Chart		
Pressure	Maximum Flow	Diameter
15 PSI	6.6 GPH	7"
20 PSI	7.5 GPH	8"
30 PSI	8.1 GPH	12"
40 PSI	9.3 GPH	14"



SHRUBBLERS®

Emit eight fingers of water that can be easily adjusted from a basic drip to a 24" diameter circle. Ideal for pots, tubs, landscaped gardens, nurseries, hanging baskets, planter boxes and more.

- Fully adjustable from 0-13 gallons per hour (GPH)
- Turn cap to adjust flow or shut off completely
- Rated up to 30 PSI

- DSHS-5 Full Circle on 5" Stake with break-off transfer barb \$3.79/5
- DSHS-100 Full Circle on 5" Stake with break-off transfer barb \$64.95/100
- DSHS180-5 Half Circle on 5" Stake with break-off transfer barb \$3.79/5
- DSHS180-100 Half Circle on 5" Stake with break-off transfer barb \$46.95/100
- DSHT-5 Full Circle on 10–32 Threaded Base . . . \$2.95/5
- DSHT-100 Full Circle on 10–32 Threaded Base . . . \$44.95/100
- DSHB-5 Full Circle on ¼" Barb Base \$2.95/5
- DSHB-100 Full Circle on ¼" Barb Base \$42.95/100

Flow Chart	
Gallons Per Hour (GPH)	Diameter
5.8	6"
8.7	12"
13	24"



MICRO-JETS

Easy-to-adjust valves with your choice of spray patterns make Micro-Jets a smart choice for watering perennials, ground covers, small trees, and shrubs. For quick installation, use EZ Stakes (p. 15).

- Maximum flow of 22 gallons per hour (GPH) at 30 PSI
- Radius of 7'-8' at 30 PSI for all Micro-Jets
- 10-32 threaded base
- Jets can be shut off individually
- Quarter and half circle patterns deliver a fan spray; full circle delivers fingers of water (see photos at left)
- Pressure range 15-45 PSI



Part #	Color	Pattern	Quantity	Price
MAJ90-5	Black	Quarter Circle	5	\$4.95
MAJ90-50	Black		50	\$39.95
MAJ180-5	Blue	Half Circle	5	\$4.95
MAJ180-50	Blue		50	\$39.95
MAJ360-5	Red	Full Circle	5	\$4.95
MAJ360-50	Red		50	\$39.95



POTSTREAM™ ADJUSTABLE FLOW

The PotStream is a side-mounted adjustable sprayer. It features a gentle stream pattern that minimizes soil erosion, and the adjustable spray allows for watering of different-sized containers and pots.

- Pressure range: 5-40 PSI
- Low application rate and gentle stream pattern
- Can be taken apart for easy cleaning

DPS-5	\$5.95/5
DPS-25	\$24.95/25
DPS-100	\$89.95/100

Flow Chart

Pressure	Maximum Flow	Radius
5 PSI	0-3.3 GPH	8.7"
10 PSI	0-4.7 GPH	9.1"
20 PSI	0-6.8 GPH	9.5"
30 PSI	0-8.3 GPH	11.0"
40 PSI	0-9.7 GPH	12.4"



SPECTRUM™

Spectrum sprayers have a full-circle spray pattern that can be easily adjusted for areas that vary in size or watering need. Great for trees, shrubs, and small turf areas.

- Easy to clean
- Fully adjustable up to 12' diameter
- Can be completely turned off
- Excellent way to establish plants with changing water needs



MSPB-5	1/4" Barbed Base	\$3.49/5
MSPB-100	1/4" Barbed Base	\$54.95/100
MSPS-5*	5" Stake	\$4.79/5
MSPS-100*	5" Stake	\$79.95/100
MSPT-5	10-32 Threaded Base	\$3.49/5
MSPT-100	10-32 Threaded Base	\$54.95/100

*Break-off Transfer Barb (14TB) is for use with 1/4" tubing.

Flow Chart

Pressure	Maximum Flow	Diameter
15 PSI	17 GPH	9'
20 PSI	20 GPH	11'
30 PSI	24 GPH	12'

MINI-SPRINKLERS



PRESS-FIT ACCESSORIES

Press-Fit accessories are super easy to install and hold up to 40 PSI.



Press-Fit Support Assembly

A complete stake assembly that includes a plastic stake or metal rod, bridge, 1/4" flexible vinyl tubing and a transfer barb. For Ein Dor Mini-Sprinklers and Wing Sprinklers only.

- MESK18 18" Metal Rod with 2' Tubing \$2.39
- MESK36 36" Metal Rod with 3' Tubing \$17.95/5*

*Due to shipping issues, 5 is the minimum quantity.



Press-Fit Barb

Use with Mini-Sprinklers and Wing Sprinklers. The barb end fits 1/4" (.250" OD) tubing.

- MEBARB-5 \$1.69/5
- MEBARB-100 \$14.95/100



Press-Fit Valve *Easier than a plug!*

Install between the bridge and sprinkler head as an individual shutoff.

- MEVSO \$3.10/5



Plug

To shut off a Mini-Sprinkler, remove the sprinkler head and insert this special press-fit plug.

- MEPLUG \$1.95/5

EIN DOR MINI-SPRINKLERS

These mini-sprinklers are great for landscaped areas, garden beds, propagation, and smaller container groupings. A flat spray angle reduces wind drift. Full circle spray pattern with even distribution of droplets.

The sprinkler heads have a press-fit base, which must be used with either a Support Assembly, Press-Fit Barb, or Press-Fit Adapter (see MESK, MEBARB below). Use either the Plug (MEPLUG) or Press-Fit Valve (MEVSO) to shut off individual sprinkler heads.

All Mini-Sprinklers \$3.95/5 \$69.95/100

Part #	Color	Flow*	Diameter
MELOW	Purple	5 GPH	5'
MELTB	Blue	10 GPH	7'
MEBLA	Black	18 GPH	9'
MERED	Red	32 GPH	13'

*Measured at 30 PSI. Diameter is approximately 10% smaller at 25 PSI. 20% diameter loss when inverted.

WING SPRINKLERS

A low-cost alternative for large areas. Great for xeriscapes where low water usage is desirable. Best at low pressures (15–30 PSI). Full circle only with even distribution of droplets.

Press-fit sprinklers must be used with either the Press-Fit Support Assembly, Press-Fit Barb, or Press-Fit Adapter (MESK, MEBARB) for use in mainline or 1/4" tubing. Optional shutoff valve (see MEVSO). Operates in upright position only.

All Wing Sprinklers \$5.95/5 \$119.95/100

Part #	Color	Flow @ 30 PSI	Diameter @ 30 PSI
MSWGR	Olive Green	5 GPH	8'
MSWLB	Light Blue	9 GPH	15'
MSWBL	Black	18 GPH	19'
MSWBRN	Brown	34 GPH	22'

THE SPRAYER FOR HIGHER VOLUME



GROWERS CHOICE

BEST SELLER!

DOWN-SPRAY SPRINKLERS (FULL CIRCLE)

Down-Spray sprinkler assemblies include a 12" galvanized wire stake and 36" of supply tubing with barb. The C-Frame Down-Spray is a 360° spray jet with a 45° downward trajectory that targets the root zone, to reduce runoff and eliminate over-spray.

- 20" diameter, full-circle spray pattern
- Wets evenly with minimal surface disturbance
- Use on large plants or containers
- UV stabilized for long life
- Shutoff clip to stop flow (sprinkler assembly only)

Color	GPH @ 10 PSI	GPH @ 20 PSI
Black	4.8	7.2
Blue	7.0	10.5

Complete Sprinkler Support Assembly with Tubing & Stake

MADASBLK-5	Black . . .	\$8.95/5
MADASBLK-25	Black . . .	\$39.95/25
MADASBLU-5	Blue . . .	\$8.95/5
MADASBLU-25	Blue . . .	\$39.95/25

Without Sprinkler Support Assembly (Head Only)

MADBLK-5	Black . . .	\$1.89/5
MADBLK-100	Black . . .	\$29.95/100
MADBLU-5	Blue . . .	\$1.89/5
MADBLU-100	Blue . . .	\$29.95/100



MINI-JETS

These very popular and economical sprayers work well at pressures as low as 5 PSI. They have a flat spray angle to minimize water on foliage, and various spray patterns and flows to provide versatility. At pressures above 30 PSI, the spray turns into more of a mist. All Mini-Jets have a 10-32 threaded base and will fit into ¼" tubing, or Rigid Risers. Use the hex end of the Orange Handle Punch (p. 14) for easy installation.

All Mini-Jets \$2.19/10 \$18.00/100



Possibly the only spray head you will ever need!

Part #	Color	Spray Pattern	@ 15 PSI GPH Radius/Ft		@ 30 PSI GPH Radius/Ft	
MSBL90	Black	Quarter	4.8	4	6.8	6
MSBL180	Black	Half	4.8	3	6.8	4½
MSBL300	Black	Full	4.8	4	6.8	5
MSBLSTR	Black	Strip	4.8	4	6	4½
MSBU90	Blue	Quarter	5	4½	12.9	6
MSBU180	Blue	Half	8.8	3½	12.9	5
MSBU300	Blue	Full	8.8	4½	12.9	5½
MSBUSTR	Blue	Strip	8.9	5½	10.4	6
MSGR90	Green	Quarter	13.8	4½	19.5	6½
MSGR180	Green	Half	13.8	4	19.5	5½
MSGR300	Green	Full	13.8	5	19.5	6
MSGRSTR	Green	Strip	15.3	7	18.3	7
MSRD90	Red	Quarter	20.0	5	28.9	6½
MSRD180	Red	Half	20.0	4½	28.9	6
MSRD300	Red	Full	20.0	5	28.9	4½
MSRDSTR	Red	Strip	21.6	7½	26.5	10



WITH DEFLECTOR



WITHOUT DEFLECTOR

Note: For part numbers in below chart, stock spinners are pre-installed and do not include tubing. The blue spinner (MSNSBLD) must be ordered separately and changed out.

Part #	Base Color	Flow	Spinner	Wetted Radius
MSNP(T)	Purple	5.3 GPH	Purple (stock)	8'
			Blue with deflector	2'
			Blue without deflector	4'
MSNBLU(T)	Blue	10.9 GPH	Purple (stock)	8.5'
			Blue with deflector	3'
			Blue without deflector	5.5'
MSNBLA(T)	Black	18.9 GPH	Black (stock)	10'
			Blue with deflector	3'
			Blue without deflector	8'



SUPERNET PRESSURE COMPENSATING SPRINKLERS

Water more trees on the same zone with equal water distribution regardless of row length or elevation changes. Spray pattern may be enlarged as trees grow by simply changing the spinner. Heavy-duty construction for long life. Mounts on support stake (see below).

- Excellent for long rows and uneven terrain
- Ideal for orchards and new tree plantings
- Easy assembly
- Clog resistant and self-flushing
- Pressure range 25–50 PSI
- Replace purple spinner with MSNSBLD to water younger trees. Break off deflector as tree grows.



MSNBLU



MSNSBLD

MSNSTK

SuperNet Assemblies

We recommend purchasing SuperNet sprinklers with the tubing and barb pre-installed. See flow and radius descriptions below.

MSNP	Purple Base (Stock) ..	\$4.69
MSNBLUT	Blue Base	\$4.69
MSNBLAT	Black Base	\$4.69

Sprinkler Only

MSNP	Purple Base (Stock) ..	\$3.49
MSNBLU	Blue Base	\$3.49
MSNBLA	Black Base	\$3.49

SuperNet Accessories

The SuperNet sprinkler can be mounted on the MSNSTK stake.

MSNSBLD	Blue Spinner with Deflector	\$0.34
MSNSTK	13" Blue Support Stake	\$0.99



TREE WATERING STAKES

We recommend these stakes for saturating the soil at a deep level. This encourages trees to send their roots further down, improving survival rates in drought and high winds. Promoting a deep root system also reduces surface cracking and buckling near pathways, sidewalks, patios, or driveways.

- Conserves water, prevents runoff and erosion
- Aerates the soil, promotes deeper rooting
- You can easily add fertilizer into the shaft
- Internal filter to keep roots and rocks out
- Easy to drive the stake into the soil
- UV protected slotted cap for drip tubing
- 14" stake is used for small trees, shrubs, rose bushes

ASTK14	14"	\$9.95
ASTK24	24"	\$11.95



A. Hunter PGP-ADJ 4" Pop-Up Rotor

The Hunter PGP is the world's bestselling rotary sprinkler. The PGP delivers a lower volume of water that can be absorbed by the ground, reducing runoff and waste.

- 12 interchangeable nozzles
- Pressure Range 30-70 PSI
- 30' to 42' radius at 40 PSI
- 40-to-360-degree adjustable arc
- ¾" FPT inlet

PGP \$18.85

B. TORO T5P-RS-5" Pop-Up Rotor

The Toro® T5 RapidSet rotor can be set in seconds. The Toro® T5 RapidSet series rotor will meet your basic irrigation needs. Easily and quickly adjust the arc, no tools needed.

- 8 standard nozzles
- Pressure Range 25-65 PSI
- 25' to 50' radius
- 40-to-360-degree adjustable arc
- ¾" FPT inlet

PTOT5PRS \$13.98

C. K-RAIN 30 PSI Spray Body w/ In Stem Check Valve 4" Pop Up

This K-Rain sprinkler body 4-inch pop up works with Orbit and K-Rain rotary nozzles.

- Pressure Range 20-70 PSI
- ½" FPT inlet
- Nozzles not included

PGKPRO30 \$6.75

Rain Bird MPR Nozzles

These Rain Bird MPR Nozzles are known for their performance. Trusted for decades by more installers and contractors than any other brand. The nozzle is made to provide even water distribution and flexibility in design. Fits all Rain Bird sprinklers and shrub adapters.

- Pressure Range 15 to 30 PSI
- Fixed spray Nozzle
- Female thread inlet
- Use with Rain Bird Sprinklers

PRBMPR8H	8 ft. Half Circle Nozzle (180 Degree) . . .	\$.95
PRBMPR10H	10 ft. Half Circle Nozzle (180 Degree) . . .	\$.95
PRBMPR15H	15 ft. Half Circle Nozzle (180 Degree) . . .	\$.95
PRBMPR8F	8 ft. Full Circle Nozzle (360 Degree) . . .	\$.95
PRBMPR10F	10 ft. Full Circle Nozzle (360 Degree) . . .	\$.95
PRBMPR15F	15 ft. Full Circle Nozzle (360 Degree) . . .	\$.95

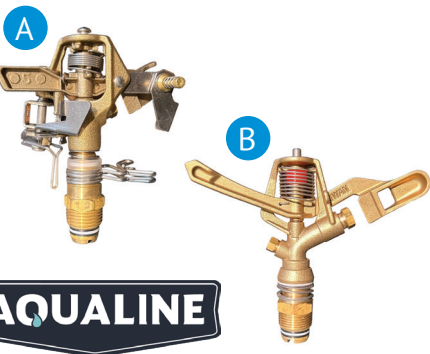


Rain Bird R-VAN Adjustable Rotary Nozzle

Rain Bird® R-VAN Adjustable Rotary Nozzles feature rotating stream technology which uniformly delivers water at a low precipitation rate, significantly reducing runoff and erosion.

- Pressure Range 30 to 55 PSI
- Female thread inlet
- Use with 1804,1806,1812 Rain Bird spray bodies, 1/2" risers and adapters.

PRBVAN14	8 to 14 ft. Full Circle Rotary Nozzle . . .	\$4.25
PRBVAN18	13 to 18 ft. Full Circle Rotary Nozzle . . .	\$4.25



A. Aqualine I50A-532 ½" Brass Adjustable Circle Impact Sprinkler

The Adjustable Impact Full Circle Impact Sprinkler is designed from durable brass material. The Impact Sprinkler from Aqualine will water large residential and commercial areas.

- Adjustable for full circle and 20-340-degree arc
- 25-degree trajectory angle
- Pressure Range 25-50 PSI
- Radius 30 to 40 ft.
- Flow: 2.60 to 5 GPM

PAQI50A-532 \$19.58

B. Aqualine I75A-532 ¾" Brass Adjustable Circle Impact Sprinkler

The Full Circle Impact Sprinkler is designed from durable brass material. The Impact Sprinkler from Aqualine will water large residential and commercial areas.

- Adjustable for full circle and 20-340-degree arc
- Pressure Range 25-60 PSI
- Radius 42 to 60 ft.
- Flow: 3.8 to 14 GPM

PAQI75A-532 \$51.25

STURDY BARB FITTINGS

Strong hold for higher pressure systems.



Female Hose Start (Swivel)		
Part #	Size	Price
BFHDURA▲	½"	\$4.35
BFH34DURA▲	¾"	\$4.95
BFH1▲	1"	\$4.45



Male Hose		
Part #	Size	Price
BMH▲	½"	\$2.85
BMH34▲	¾"	\$2.95
BMH1▲	1"	\$3.25



Coupler		
Part #	Size	Price
BCDURA▲	½"	\$1.25
BC34DURA▲	¾"	\$1.45
BC1▲	1"	\$1.45



Reducing Coupler		
Part #	Size	Price
BRC3412▲	¾" x ½"	\$1.65
BRC112▲	1" x ½"	\$2.75
BRC134▲	1" x ¾"	\$2.75

Hose threads are always the same size. These fittings are made of schedule 40 PVC plastic and may vary in color.



Tee		
Part #	Size	Price
BTDURA▲	½"	\$2.65
BT34DURA▲	¾"	\$4.85
BT1▲	1"	\$4.85



Reducing Tee		
Part #	Size	Price
BRT3412▲	¾" x ½"	\$3.25
BRT134▲	1" x ¾"	\$3.75
BRT112▲	1" x ½"	\$3.75
BRT11212▲	1½" x ½"	\$8.45
BRT1121▲	1½" x 1"	\$8.45



Elbows		
Part #	Size	Price
BLDURA▲	½"	\$2.45
BL34DURA▲	¾"	\$2.95
BL1▲	1"	\$3.25



Plug		
Part #	Size	Price
BP▲	½"	\$1.85
BP34▲	¾"	\$1.95
BP1▲	1"	\$2.95



Female Pipe		
Part #	Size	Price
BFP12▲	½"	\$4.45
BFP34▲	¾"	\$4.95
BFP1▲	1"	\$4.95



Male Pipe		
Part #	Size	Price
BMP12▲	½"	\$1.05
BMP34▲	¾"	\$1.25
BMP1▲	1"	\$1.29



Barbed Valves*			
Part #	Size	Tubin ID	Price
BVA▲	½"	.600"	\$2.59
BVA34▲	¾"	.820"	\$3.95
BVA1▲	1"	--	\$4.45

*These Valves are not PVC.

**Don't see what you need?
Head to DRIPWORKS.COM**

Stainless Steel Crimping Clamps

These gap-free clamps are an inexpensive solution for commercial and industrial applications. They are easy to install, secure to 100 PSI, and will not loosen up over time. Crimping clamps must be cut off for removal. They are not reusable.

- BOSS12 Clamp for ½" Drip Tubing . . . \$2.80/10 \$20.00/100
- BOSS34 Clamp for ¾" Drip Tubing . . . \$3.20/10 \$25.00/100
- BOSS1 Clamp for 1" Oval Hose \$3.50/10 \$28.00/100
- BOTOOL Crimping Tool \$34.95



Stainless Steel Tubing Clamps

American, high quality stainless steel clamps with stainless bands and gears. Stronger and longer-lasting than standard imports with just stainless bands. Use on barbed fittings when pressure is more than 20 PSI.

- BSHC12 ½" Clamp Size #8 \$20.95/10
- BSHC ½" or ¾" Clamp Size #12 . . . \$21.90/10
- BSHC1 1" Clamp Size #16 \$22.95/10



Note: Will not fit on thicker-walled, high-density poly pipe (HDPE). Install with the Crimping Tool (BOTOOL).



EZ-FLO FERTILIZER INJECTORS

Recommended for backyard gardeners, commercial landscapers, and small farms. Just fill the tank (with premixed dry fertilizer or a concentrated liquid fertilizer – not oil based), set the adjustment valve, and the fertilizer solution will automatically flow when the system runs.

- Low minimum flow (120 GPH) with standard bib adapter (IEZBIB)
- Works down to 7.5 GPH using included flow restrictor discs
- Tank sits on ground for less stress on fittings and easier filling
- Adjustable dilution rates from 100:1 to 1,000:1

EZ-Flo Low-Pressure Tanks

IEZH34	¾ Gallon Tank @ 5-50 PSI	\$79.95
IEZH2	2 Gallon Tank @ 5-50 PSI	\$104.95
IEZ1GUP*	1 Gallon Tank @ 5-80 PSI	\$149.95

*IEZ1GUP is rated for high pressure.



CHAPIN PRO SERIES POLY SPRAYER

Anyone can use the Chapin ProSeries Poly Sprayer from the homeowner to a landscape professional. This sprayer features the SureSpray Anti-Clog filter, which will guarantee great performance every time. Use with fertilizers, weed killers, or pesticides.

APRO1	1 gallon	\$54.95
APRO2	2 gallon	\$59.95
APRO3	3 gallon	\$64.95



ECONOMICAL INJECTORS

Economical, flexible, and easy to use, these injectors are ideal for small to medium sized gardens, orchards, or grows. Hook them to your drip system to fertilize while you water.

CHAPIN HYDROFEED FERTILIZER INJECTOR

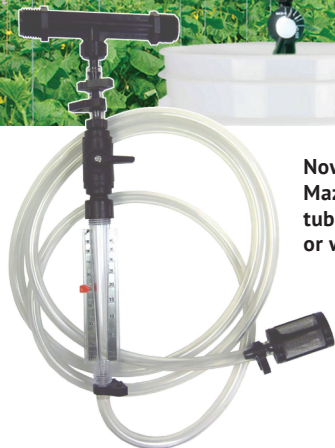
Ideal for small to medium-size gardens. Fertilizer injector comes with a clear tank for easy monitoring of usage, and funnel-top mouth for easy filling. Drain valve will allow you to quickly empty remaining product and water from the tank. Use with liquid, granular concentrates, or fish emulsion applications. Works best at 40 PSI. Maximum incoming pressure 60 PSI.

IHF16	16 oz. Tank	\$59.95
IHF24	24 oz. Tank	\$69.95
IHF32	32 oz. Tank	\$84.95

MAZZEI INJECTOR LINE

This Venturi-style injector is a great low-cost option that delivers excellent results. It's commercial grade with no moving parts, so it's easy to maintain and worry-free. Perfect for use with water soluble organic fertilizers.

NEW KIT ASSEMBLIES



Now a complete kit, with Mazzei, Flow Meter and Suction tube. Add it to your system with or without a bypass.

MAZZEI (VENTURI STYLE) FERTILIZER INJECTOR

Mazzei fertilizer injectors are commercial-grade, Venturi injectors with no moving parts to wear out or break down. As water passes through the unit, a pressure differential creates a vacuum that draws fertilizer into the line. Install on a bypass for less restriction (bypass not sold). For the Mazzei to work properly there must be a minimal pressure differential between the inlet pressure and the outlet pressure, this will create the vacuum effect. You will need to experiment to get the dosages required, but once operating, the Mazzei is incredibly reliable and relatively maintenance free. 1/2" and 3/4" Mazzei kits include Mazzei Injector, Suction Line Kit, and Flow meter.

- Pressure Range 20-100 PSI.
- Easy installation
- Energy efficient
- Male pipe thread (MPT) inlet and outlet

1/2" Injectors and Accessories

- IM12VLFKIT 1/2" Very Low Flow Injector Kit (#K 283-S) ..\$87.95
- IM12LKIT 1/2" Low Flow Injector Kit (#K 287-S).....\$87.95
- IM12HKIT 1/2" High Flow Injector Kit (#K 384-S).....\$87.95

3/4" Injectors and Accessories

- IM34LKIT 3/4" Low Flow Injector Kit (#K 484A-S)\$95.95
- IM34HKIT 3/4" High Flow Injector Kit (#K 584-S).....\$95.95

1" Injectors and Accessories

- IM1L 1" Low Flow Injector (#878).....\$89.95
- IM1 1" High Flow Injector (#1078).....\$89.95
- IM1SA 1" Suction Assembly (same as 1 1/2").....\$129.95

CHOOSE MODEL SIZE CAREFULLY.

Too large and it will not draw the fertilizer, too small and it will restrict the flow of your system. If in doubt, choose a smaller size injector and install on a bypass. We recommend using a bypass for all units for ease of adjustment and maintenance.

Mazzei Flow Chart (Venturi style)			
Size	Minimum Flow at 50 PSI Inlet	Fertilizer Draw with outlet pressure at	
		30 PSI (20 PSI drop)	10 PSI (40 PSI drop)
1/2" Very Low (#K 283-S)	30 GPH	2 GPH	6 GPH
1/2" Low (#K 287-S)	60 GPH	3 GPH	8 GPH
1/2" High (#K 384-S)	150 GPH	10 GPH	14 GPH
3/4" Low (#K 484A-S)	240 GPH	12 GPH	17 GPH
3/4" High (#584-S)	425 GPH	21 GPH	25 GPH
1" Low (#878)	750 GPH	56 GPH	75 GPH
1" High (#1078)	1050 GPH	86 GPH	92 GPH



MIXRITE INJECTOR FOR THE PROFESSIONAL GROWER

This injector is precision made in Israel and is ideal when injecting either organic or synthetic fertilizers. The MixRite injector is the easiest commercial fertilizer injector to clean and maintain. With only three seals to replace, it can be rebuilt and put back into service in a fraction of the time other units require. It reliably meters fertilized solution into your line and is powered entirely by the water flowing through it. Choose the MixRite according to the concentration of fertilizer you want to add. Install on a bypass for easy cleaning and maintenance. A 2% internal bypass unit used for injecting highly corrosive solutions is available at Dripworks.com.

- Simple to install, operate, and maintain
- Pressure loss at max flow: 14.5 PSI
- Shutoffs on all models except IMR1
- UV-resistant plastic

Part #	Flow in GPH	Mix Ratios	Pressure Range	Inlet/Outlet	Max Flow	Price	Features
IMR1▲	5.4–660/GPH	100:1 1% (non-adjustable)	3–120	¾" MPT	11 GPM	\$329.95	This specific MixRite model is non-adjustable and does not have a manual shutoff. Ideal for cleaners that are not corrosive and fertilizers.
IMR250▲	5.4–660/GPH	500:1–50:1 .2 to 2%	3–120	¾" MPT	11 GPM	\$469.95	These models have a manual On-Off that will shut down additive injection, allowing a continual water flow. Select the model with the desired fertilizer dilution concentration (mix ratio) for the fertilizer or additive that you are injecting into your line. *Choose the IMR10V2 for less concentrated, organic fertilizers. The 10% allows for a higher dose or organic fertilizer.
IMR450▲	5.4–660/GPH	250:1–25:1 .4 to 4%	3–120	¾" MPT	11 GPM	\$459.95	
IMR10V2*▲	5.4–840/GPH	100:1–10:1 1 to 10%	3–120	¾" MPT	11 GPM	\$689.95	

Prevent water from flowing back into your home water supply with backflow prevention check valves and vacuum breakers at DRIPWORKS.COM

CONTROL YOUR GREENHOUSE ENVIRONMENT

Use these misters on patios and decks, in barns, greenhouses, and kennels, and around the pool. They are good for starting delicate seedlings, salad greens, and ferns.

Find greenhouse watering solutions at DRIPWORKS.COM



INVERTED MINI WOBBLER

Specially designed for overhead applications. Great for seed propagation. Fine spray and outstanding uniformity.

- Base: 1/2" MPT
- Flow: 45–75 GPH
- Optimal Pressure: 20–25 PSI
- Covers large area

Fine Spray Overhead Sprinkler

Part #	Nozzle Color	@ 20 PSI		@ 25 PSI		Price
		GPH	DIA*	GPH	DIA*	
MWIG	Gold	66/GPH	34'	75/GPH	34.5'	\$5.95
MWIBG	Beige	45/GPH	32'	60/GPH	32.5'	\$5.95
MWANTI	Anti-Drip Add-On (Sprinkler head sold separately)					\$7.95

*Diameter at 6' above beds.



FOGGER WITH ANTI-DRIP

This versatile fogger from Rivulus is great for seed propagation, greenhouse humidification or livestock cooling. The built-in anti-drip prevents over-watering after the system shuts off. This is a high-pressure fogger with an optimal operating range of 50–70 PSI. Watering diameter 2'-3'.

- MF2W 2-Way \$3.49
- MF4W 4-Way \$4.95



VARI MISTER

The Vari Mister has a built-in valve to control the flow and pattern size of the spray. Maximum diameter is 36". Can be shut off when not in use. Maximum flow ranges from 4 GPH at 10 PSI to 7 1/2 GPH at 30 PSI. 10–32 threaded base works with 1/4" tubing or a Rigid Riser.

- MV-5 \$4.69/5



NETAFIM COOLNET PRO FOGGER

The CoolNet Pro Fogger produces a fine droplet for fast evaporation. The average droplet size is 65 microns at 2 PGH per nozzle. This 4-way Fogger helps maintain high humidity levels in your greenhouse.

- MNCOOLNETH 58 PSI \$7.51
- MNCOOLNETL 24 PSI \$7.51

Use with Netafim Hanging Assembly available online at DRIPWORKS.COM



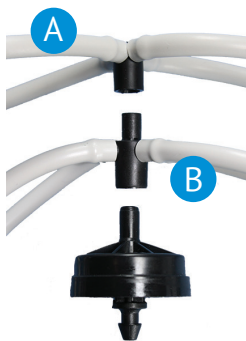
WOODPECKER MULTI-OUTLET DRIPPER ASSEMBLY

Use these assemblies to split the flow of one Woodpecker or Woodpecker Jr. (p. 26) into 4 or 8 containers. Reduces flow and saves money. Great for greenhouses and nurseries.

- Attaches to the outlet of the emitter
- Each assembly includes two 18" and two 30" tubes with Arrow Drippers attached
- DMWASS is for four outlets only
- DMWST is a stackable assembly

DMWASS	4-Way Flat Assembly	\$3.05
DMWST*	4-Way Stackable Assembly	\$3.49

*Use with DMWASS for 4 more containers. Woodpecker Emitters not included.



ASSEMBLY OPTIONS

These pre-assembled units can water 4, 8, or more containers coming off one Woodpecker PC emitter.

- A** DMWASS Flat Assembly
- B** DMWST Stackable Assembly



ANTI-DRIP DEVICES FOR HANGING MISTERS AND SPRINKLERS

In greenhouses with overhead irrigation, each sprinkler or mister assembly needs an anti-drip device to prevent damage to plants directly below. All parts have press-fit ends for easy installation. Use with Mini-Sprinkler Heads (p. 32) or Tornado Misters with press-fit bases (below). Note: The anti-drip device works in both directions. 10 PSI minimum to open.

MEAD	Anti-drip (minimum 10 PSI)	\$1.89
MEGRO	Grommet for PVC Insertion	\$1.39
MECPL	Press-fit Coupler	\$2.49/10
MEBARB-5	Barb for Poly Insertion	\$1.69/5
MEBARB-100	Barb for Poly Insertion	\$14.95/100
MTFBPR	Black Tornado Mister* (low flow)	\$2.95/5

*5.5 GPH/4" diameter at 40 PSI.

ASSEMBLY NOTES

These examples show two options for anti-drip device setup:
(A) When drilling into PVC pipe; (B) When punching into poly tubing.

INTO PVC

- A** A 7/16" hole is drilled into PVC, MEGRO inserted, and MEAD threaded into the grommet. Press-fit coupler (MECPL) joins the anti-drip device to the press-fit mister.

INTO POLY

- B** A hole is punched into poly tubing (punches, p. 16) and the assembled MEBARB + MEAD + press-fit mister is inserted.

NETAFIM™ TECHLINE EZ 12MM TUBE AND FITTINGS



Techline EZ 12 mm Blank Tubing 250' Roll

The Techline® EZ is easy to install, use for various garden applications and for sub surface applications. It is UV resistant and adaptable to any planting area. Pressure Range 6 to 58 PSI.

TLEZ0025 \$39.49

Techline EZ 12mm .42 GPH 6" Emitter Spacing 200' Roll

The Techline® EZ is a pressure compensating, great for any garden, landscape, and sub surface applications. The anti-siphon emitter in the dripline is self-flushing which is ideal for harsh agricultural applications. Pressure Range 6 to 58 PSI.

TLEZ4-0602 \$74.49



Techline EZ 12 mm Male Adapter 1/2"

The Netafim Male Adapter is used to connect Netafim Techline® EZ tubing to a female 1/2" pipe fitting. Maximum Pressure 50 PSI

T12050MA \$0.72



Techline EZ 12mm Insert Male Adapter 3/4"

The Male Adapter is used to connect Netafim Techline® EZ tubing to a female 3/4" pipe fitting. Maximum Pressure 50 PSI.

T12075MA \$0.79



Techline EZ 12mm Insert Elbow

The elbow is used to make a 90° bend with Netafim Techline® EZ tubing. Maximum Pressure 50 PSI.

T12ELL \$0.49



Techline EZ 12mm Insert Coupling

The insert coupling is used to join two pieces of Netafim Techline® EZ tubing. Maximum Pressure 50 PSI.

T12COUP \$0.40



Techline EZ 12mm Insert Cross

The Insert Cross is 4-way fitting used to connect multiple Netafim Techline® EZ tubing. Maximum Pressure 50 PSI.

T12CROSS \$1.09



Techline EZ 12mm Insert Tee

The tee is used to branch off a Netafim Techline® EZ tubing. Maximum Pressure 50 PSI.

T12TEE \$0.52



Techline EZ 12mm Combination Tee (Ins x Ins x 3/4" FPT)

The Netafim 3/4" Combination Tee is used to connect Netafim Techline® EZ tubing to a female 3/4" pipe fitting. Maximum Pressure 50 PSI

T12075FTEE \$1.79



Techline EZ 12 mm Figure Eight Line End

The end fitting is used to end a line of Netafim Techline® and driplines. Simply slip over the line bend the tubing and slip over the end again. Maximum Pressure 50 PSI.

T12FIG8 \$0.22

NETAFIM™ TECHLINE CV 17MM TUBE AND FITTINGS



Techline CV Blank Tubing 17mm

The Netafim Techline® CV is easy to install, use for various garden and sub surface applications. It is UV resistant and adaptable to any planting area.

TLCV001 (100' roll) \$29.95

TLCV0025 (250' roll) \$73.95

Techline Copper/ CVRX Blank Tubing 250' Roll

The Netafim Techline® is easy to install, use to various garden applications and sub surface applications. It is a great addition to any garden or landscape.

TLCVXR0025 \$78.95

Techline CV 17mm Emitter Tubing 12" spacing 0.6 GPH

The Netafim Techline CV is a pressure compensating dripline with a check valves. The flow path in the emitter will prevent root intrusion without any reliance on chemicals.. Pressure Range 14.5 to 58 PSI.

TLCV6-1201 0.6 GPH (100' roll) \$63.95

TLCV6-12025 0.6 GPH (250' roll) \$159.95

Techline CV 17mm Emitter Tubing 12" spacing 0.92 GPH

The Netafim Techline CV is a pressure compensating dripline with a check valves. The flow path in the emitter will prevent root intrusion without any reliance on chemicals. Pressure Range 14.5 to 58 PSI.

TLCV9-1201	0.92 GPH (100' roll)	\$63.95
TLCV9-12025	0.92 GPH (250' roll)	\$159.95

Techline CV XR 17mm Emitter Tubing 12" Spacing 0.61 GPH

The Netafim Techline CV XR is a pressure compensating dripline with a check valve enhanced with copper for long lasting protection. The Techline CV XR is ideal for sub surface applications. The Techline CV XR Dripper is highly resistant to clogging from poor quality water, thus increasing filtration efficiency. Pressure Range 14.5 to 58 PSI.

TLCVXR6-1201	0.61 GPH (100' roll)	\$67.95
TLCVXR6-12025	0.61 GPH (250' roll)	\$169.95

Techline CV XR 17mm Emitter Tubing 12" spacing 0.92 GPH

The Netafim Techline CV XR is a pressure compensating dripline with a check valve enhanced with copper for long lasting protection. The Techline CV XR is ideal for sub surface applications. The Techline CV XR Dripper is highly resistant to clogging from poor quality water, thus increasing filtration efficiency. Pressure Range 14.5 to 58 PSI.

TLCVXR9-1201	0.92 GPH (100' roll)	\$67.95
TLCVXR9-12025	0.92 GPH (250' roll)	\$169.95

Techline CV RX 17mm Emitter Tubing 12" Spacing 0.5 GPH

The Netafim Techline CV XR is a pressure compensating dripline with a check valve enhanced with copper for long lasting protection. The Techline CV XR Dripper is highly resistant to clogging from poor quality water, thus increasing filtration efficiency. Pressure Range 14.5 to 58 PSI.

TLHCVXR5-1201	0.5 GPH (100' roll)	\$71.95
TLHCVXR5-12025	0.5 GPH (250' roll)	\$179.95



Techline 17mm Male Adapter 1/2"

The 1/2" Male Adapter is used to connect Netafim Techline® or dripline to a female 1/2" pipe fitting. Maximum Pressure 50 PSI.

TL050MA	\$0.64
-------------------	--------



Techline 17mm Male Adapter 3/4"

The 3/4" Male Adapter is used to connect Netafim Techline® or dripline to a female 3/4" pipe fitting. Maximum Pressure 50 PSI.

TL075MA	\$0.67
-------------------	--------



Techline 17mm Insert Elbow

The elbow is used to make a 90° bend with Netafim Techline® HCVXR or driplines. Use to prevent kinks in mainline. Maximum Pressure 50 PSI.

TLELL	\$0.58
-----------------	--------



Techline 17mm Insert Coupling

The coupling is used to join two pieces of Netafim Techline® or dripline. Use as a repair fitting. Maximum Pressure 50 PSI.

TLCOUP	\$0.43
------------------	--------



Techline 17mm Insert Cross

The Insert Cross is 4-way fitting used to connect multiple Netafim Techline® or driplines. Maximum Pressure 50 PSI.

TLCROS	\$1.09
------------------	--------



Techline 17mm Combination Tee (1/2 x 1/2 x 3/4" FPT)

The 3/4" Combination Tee is used to connect Netafim Techline® or dripline to a male 3/4" pipe fitting. Maximum Pressure 50 PSI.

TL075FTEE	\$1.79
---------------------	--------



Techline 17mm Emitter Plug

The Emitter Plug Ring is used to plug a dripper outlet of Netafim Techline® HCVXR, HCVXR-RW/RWP, CV, DL, RW, and RWP driplines. Maximum Pressure 50 PSI.

TLDPLUG	\$3.25/25
-------------------	-----------



Techline 17mm 1/2" Figure Eight-Line End (25 pack)

The Figure Eight end fitting is used to end a line of Netafim Techline® HCVXR or driplines. Simply slip over the line bend the tubing and slip over the end again. Maximum Pressure 50 PSI.

TLFIG8-25	\$4.95
---------------------	--------



Techline 17mm Shut-Off Valve (1/2 x 1/2)

The Shut-off Valve is used to turn on and off a line of Netafim Techline® or driplines. Maximum Pressure 50 PSI.

TLSOV	\$4.25
-----------------	--------

NETAFIM™ TECHLOCK 17MM FITTINGS



Techlock 17mm Male Adapter 3/4"

The 3/4" Male Adapter is used to connect Netafim Techline® or dripline to a female 3/4" pipe fitting. Maximum Pressure 50 PSI.

TLCK075MA	\$1.49
---------------------	--------



Techlock 17mm Elbow

The elbow is used to make a 90° bend with Netafim Techline® or dripline. Use to prevent kinks in mainline. Maximum Pressure 50 PSI.

TLCKELL	\$2.99
-------------------	--------



Techlock 17mm Coupling

The coupling is used to join two pieces of Netafim Techline® or dripline. Use as a repair fitting. Maximum Pressure 50 PSI.

TLCKCOUP	\$1.69
--------------------	--------



Techlock 17mm Tee

The tee is used to branch off a Netafim Techline® or driplines. Maximum Pressure 50 PSI.

TLCKTEE	\$2.95
-------------------	--------

PROTECT YOUR POND INVESTMENT

Shield your pond liner so it lasts for a thriving, healthy pond.



GEOTEXTILE POND LINER PROTECTIVE MATERIAL

Non-woven geotextile fabric is a puncture-resistant, cost-effective, long-term solution for protecting EPDM or Poly liners. Used as pond liner underlayment, the soft, 8 oz. fabric (like a wool blanket) protects liners from large rocks and other sharp objects that may be hidden in the soil (sharp gravel, tree branches, glass, metal, etc.).

In the photo above, geotextile has been installed as an underlayment to protect the liner from rocks and sharp objects.

Also used for:

- Site drainage
- French drains
- Leach field gravel covering
- Erosion control
- Use under Poly liners when necessary

Custom sizes available!

Orders can be matched to your pond liner purchase.

Part #	Size	Size	Price
PDGEOB1515	Bundle	15' x 15'	\$104.95
PDGEOB1525	Bundle	15' x 25'	\$174.95
PDGEOB1575	Bundle	15' x 75'	\$523.95
PDGEOR15	Roll	15' x 300'	\$1,596.95

Pond liner should be unfolded over the geotextile.



EPDM RUBBER POND LINER

The most flexible and natural-looking pond liner

- Ideal for water gardens including waterfalls and streams
- The most flexible waterproof barrier for indoors or out
- UV stabilized for up to 20 years exposed to the sun

EPDM Rubber Pond Liner	45 mil PDEPDM
45 mil PDEPDM	\$1.59

REINFORCED POND LINER

For the highest quality water containment with the long-lasting material, our reinforced liners are the right choice. Made to order, fast delivery.

Reinforced Polyethylene	20 mil PDB20	24 mil PDB24	30 mil PDB30	40 mil PDB40
Square foot price	\$0.41	\$0.49	\$0.59	\$0.73
lbs/1,000 sq. ft.	75	95	135	138
Max size (sq. ft.)	100,000	75,000	80,000	40,000
Expected life in years (exposed)	10	10	12	15
Warranty (covered)	20 yrs	20 yrs	20 yrs	20 yrs

100 sq ft minimum required for any pond liner and geotextile custom order.
Pricing is subject to change.

Read more about ponds in our blog section at DRIPWORKS.COM

Shipping Instructions for Pond Liners

Please call 844.522.3747 for a freight quote and estimated delivery time.

- Shipping is not included in the prices above.
- Shipping is based on actual freight charges.
- Liners under 150 lb. are shipped via UPS.
- Liners over 150 lb. are shipped by common carrier.

- Someone must be present to inspect and accept delivery by common carrier. If you cannot unload the liner yourself, you will need to request a liftgate. Additional fees apply.
- Before signing the freight bill, inspect the liner to make sure it is the correct size and is undamaged.
- Shipping to a commercial site with equipment for unloading is recommended and can save money on freight charges.

BEAUTIFY YOUR YARD

LED Landscape lighting can dramatically enhance the enjoyment and appearance of your home and yard.



Orbit LED Landscape Aluminum Path Light, Black

Orbit's LED Landscape Path Lights adds ambiance and security to any landscape.

NHRL-BKP1 \$89.95



Orbit LED Aluminum Path Light, Bronze

The welcoming, warm light generated by Orbits LED Landscape Path Lights adds ambiance, security to any landscape.

NHRL-BRP2 \$89.95



Corona Path Light, Antique Bronze

The Area light by Corona Lighting adds an inviting ambiance and security for your landscape.

NCL-649AB \$154.95



Corona Spotlight, Antique Bronze

This Architectural Grade Directional lights by Corona Lighting adds ambiance and security to any landscape.

NCL-514AB \$109.95



Corona Step Light, Black

Fixture is made from diecast aluminum with a polyester UV powder coated finish in black.

NCL-352BK \$39.95



Corona Underwater light, Stainless-steel

This underwater light is to be used in fountains, ponds, garden pool and waterfalls to bring light to your water features.

NCL-312 \$135.95



Corona Underwater Light, Brass

This underwater light is to be used in fountains, ponds, garden pool and waterfalls to bring light to your water features.

NCL-307-AB \$143.95



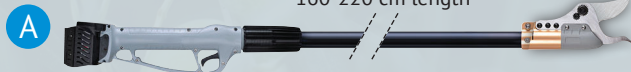
PROFESSIONAL TRIMMING TOOLS

ARVIPO MT32 Chainsaw

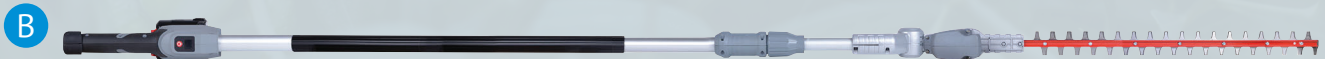
The ARVIPO MT32, one-hand, lightweight, professional cordless chainsaw. This high-performance tool has incredible cutting power to get the job done fast.

- Power Nominal-500W
- Voltage 16,8V
- Cutting diameter 120mm/4.72"
- Includes 3 Batteries 2,5Ah

ARVMT32PRO3.....\$549.00



160-220 cm length



A. ARVIPO HP37 Pole Shears

The ARVIPO HP37 effortlessly reaches the highest branches. This is a professional shear for pruning at height.

- Power Nominal-870W
- Voltage 25,2V
- Cutting diameter 45mm/1.77"
- Includes 3 Batteries 2,5Ah

ARVHP37-3.....\$740.00

B. ARVIPO TT37 Hedge Trimmer

The Arvipo Hedge Trimmer ARVIPO TT37 is the ideal tool for cutting high hedges and shrubs in the garden. The trimmer's adjustable cutting angle, which ranges from -90° to +90°, allows you to adapt it to the most suitable position for the job. The extendable handle allows you to reach the right height.

- Power Nominal 450W
- Voltage 25,2V
- Cutting diameter 27mm/0.09"
- Includes 3 Batteries 5Ah

ARVTT37-3.....\$675.00

STOCK UP ON THE MUST-HAVES

Make sure your supply cabinet is stocked with the parts and necessities that keep your drip irrigation system in working order.

Head online to see the full selection of parts and sizes at DRIPWORKS.COM



iFuse Purple Primer

Use the iFuse Purple Primer for softening and preparing of PVC and CPVC pipe and fittings. Removes grease, oil and dirt from the bonding surface of PVC and CPVC pipe and fittings.

PCPP8 8 oz. \$9.95



Red Hot Blue Glue

A favorite with contractors. Blue, medium body, fast-setting cement. For quick pressurization and demanding conditions. Can also be used with IPS tubing and flexible PVC. Rated up through 6" PVC. Low odor. No primer needed.

PCBG4 4 oz. \$7.35
 PCBG8 8 oz. \$12.95
 PCBGPT Pint. \$19.95



Thread Sealant Tape

Every pipe-threaded fitting should be wrapped with thread sealant tape or sealed with pipe dope. Wrap 3-4 layers clockwise around the threads before connecting the parts.

PCTEF 520" x 1/2" Roll \$1.89



Full port

PVC Ball Valve (Threaded)		
Part #	Size	Price
P12BVT▲	1/2"	\$2.95
P34BVT▲	3/4"	\$3.95
P1BVT▲	1"	\$4.95



PVC Ball Valve (Slip)		
Part #	Size	Price
P12BVS▲	1/2"	\$2.95
P34BVS▲	3/4"	\$3.95
P1BVS▲	1"	\$4.95



Lead free

Brass Ball Valve (Threaded)		
Part #	Size	Price
VBBILF12	1/2"	\$9.95
VBBILF34	3/4"	\$17.95
VBBILF1	1"	\$24.95



PVC Union Ball Valve		
Part #	Size	Price
P34UNBV▲	3/4"	\$14.95
P1UNBV▲	1"	\$29.95
P112UNBV▲	1 1/2"	\$39.95



Tank Adapters with Neoprene Washer		
Part #	Size	Price
P34TAD	3/4"	\$12.95
P1TAD	1"	\$17.95
P112TAD	1 1/2"	\$29.95
P2TAD	2"	\$44.95

These are used as outlets for storage tanks, ponds, and rainwater barrels. Creates a watertight seal with minimal effort.



Schedule 80 PVC Nipples and Risers			
Part #	MPT	Length	Price
P12CN▲	1/2"	1 1/4"	\$0.29
P122N▲	1/2"	2"	\$0.39
P1212N▲	1/2"	12"	\$0.98
P34CN▲	3/4"	1 1/2"	\$0.39
P342N▲	3/4"	2"	\$0.45
P344N▲	3/4"	4"	\$0.59
P12N▲	1"	2"	\$0.59
P23N▲	2"	3"	\$1.89



Slip Union		
Part #	Size	Price
P12SU▲	1/2"	\$5.95
P34SU▲	3/4"	\$6.95
P1SU▲	1"	\$9.95
P112SU▲	1 1/2"	\$17.95
P2SU▲	2"	\$19.95



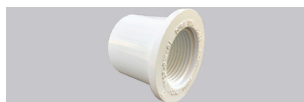
Threaded Union		
Part #	Size	Price
P12TU▲	1/2"	\$5.95
P34TU▲	3/4"	\$7.29
P1TU▲	1"	\$9.95
P112TU▲	1 1/2"	\$16.95
P2TU▲	2"	\$19.95

Key for PVC fitting types:

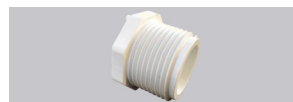
S = Slip (socket) FPT = Female Pipe Thread T = Threaded MPT = Male Pipe Thread



Bushings (S x S)		
Part #	Size	Price
P3412B▲	¾" x ½"	\$0.59
P112B▲	1" x ½"	\$0.95
P134B▲	1" x ¾"	\$1.15
P11234B▲	1½" x ¾"	\$1.69
P1121B▲	1½" x 1"	\$1.69



Bushings (S x FPT)		
Part #	Size	Price
P3414STB▲	¾" x ¼"	\$1.34
P3412STB▲	¾" x ½"	\$1.02
P112STB▲	1" x ½"	\$1.65
P134STB▲	1" x ¾"	\$1.65
P11234STB▲	1½" x ¾"	\$2.92
P1121STB▲	1½" x 1"	\$2.55



Threaded Bushing (MPT x FPT)		
Part #	Size	Price
P3412TTB▲	¾" x ½"	\$1.80
P112TTB▲	1" x ½"	\$2.52
P134TTB▲	1" x ¾"	\$2.52
P11234TTB▲	1½" x ¾"	\$4.59
P1121TTB▲	1½" x 1"	\$3.95



PVC Insert* x MPT		
Part #	Size	Price
P12MFA▲	½"	\$0.98
P34MFA▲	¾"	\$1.15
P1MFA▲	1"	\$1.95
P112MFA▲	1½"	\$3.19

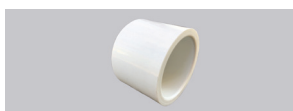
*Glues into PVC socket.



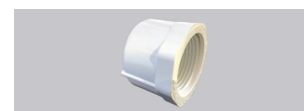
Elbow (S x S)		
Part #	Size	Price
P1290▲	½"	\$0.59
P3490▲	¾"	\$0.65
P3412R90▲	¾" x ½"	\$1.25
P190▲	1"	\$1.25
P11490▲	1¼"	\$2.18
P11290▲	1½"	\$2.39
P290▲	2"	\$3.25



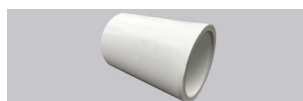
45° Elbow (S x S)		
Part #	Size	Price
P1245▲	½"	\$1.02
P3445▲	¾"	\$1.55
P145▲	1"	\$1.89
P11245▲	1½"	\$3.29
P245▲	2"	\$4.25



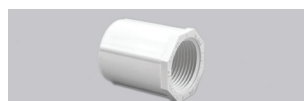
Slip Cap		
Part #	Size	Price
P12CA▲	½"	\$0.55
P34CA▲	¾"	\$0.55
P1CA▲	1"	\$1.05
P112CA▲	1½"	\$1.59
P2CA▲	2"	\$1.85



Threaded Cap		
Part #	Size	Price
P12TCA▲	½"	\$1.16
P34TCA▲	¾"	\$1.35
P1TCA▲	1"	\$2.00



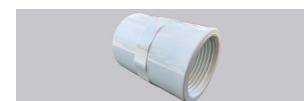
Coupler (S x S)		
Part #	Size	Price
P12C▲	½"	\$0.40
P34C▲	¾"	\$0.55
P3412RC▲	¾" x ½"	\$1.05
P1C▲	1"	\$0.95
P114C▲	1¼"	\$1.33
P112C▲	1½"	\$1.25
P2C▲	2"	\$2.25



Threaded Coupler (FPT x FPT)		
Part #	Size	Price
P12TC▲	½"	\$0.79
P34TC▲	¾"	\$1.44
P3412TRC▲	¾" x ½"	\$1.87
P1TC▲	1"	\$1.85
P134TRC▲	1" x ¾"	\$2.75
P112TC▲	1½"	\$12.49



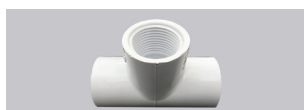
Male Adapter (MPT x S)		
Part #	Size	Price
P12MA▲	½"	\$0.55
P34MA▲	¾"	\$0.55
P34M12S▲	¾" x ½"	\$1.05
P1MA▲	1"	\$1.05
P114MA▲	1¼"	\$1.33
P112MA▲	1½"	\$1.80
P2MA▲	2"	\$2.35



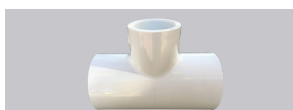
Female Adapter (FPT x S)		
Part #	Size	Price
P12FA▲	½"	\$0.65
P34FA▲	¾"	\$0.85
P34F12S▲	¾" x ½"	\$1.15
P1FA▲	1"	\$1.05
P112FA▲	1½"	\$1.80
P2FA▲	2"	\$2.35



Tee (S x S x S)		
Part #	Size	Price
P12T▲	½"	\$0.76
P34T▲	¾"	\$0.89
P1T▲	1"	\$1.55
P114T▲	1¼"	\$2.65
P112T▲	1½"	\$3.10
P2T▲	2"	\$2.85



Combo Tee (S x S x FPT)		
Part #	Size	Price
P12STT▲	½"	\$1.02
P3412STT▲	¾" x ½"	\$1.33
P34STT▲	¾"	\$1.56
P112STT▲	1" x ½"	\$1.99
P134STT▲	1" x ¾"	\$2.92
P1STT▲	1"	\$2.75



Reducing Tee (S x S x S)		
Part #	Size	Price
P3412RT▲	¾" x ½"	\$1.05
P112RT▲	1" x ½"	\$1.79
P1121RT▲	1½" x 1"	\$4.95
P11234RT▲	1½" x ¾"	\$4.95



Marlex Street Ell (MPT x FPT)		
Part #	Size	Price
PMAR1290▲	½"	\$0.65
PMAR3490▲	¾"	\$0.85

EXTEND YOUR GROWING SEASON!

Shield your plants and crops from wind, insects, and cold.

GCI ROWCOVER

GCI Rowcover shields plants from frost, cold, wind, and insects. It is an easy way to prolong the growing season in both spring and fall. Available in two weights for use on row crops, garden beds, shrubs, individual fruit trees, and deck containers.



GCI Lightweight Frost Protection

Jumpstart or prolong the growing season. Increase yield and protect plants from frost, wind, and insect damage.

- 85% light transparency
- 0–4 degrees frost protection

GC05750	7' x 50'\$21.95
GC057250	7' x 250'\$82.95
GC057500	7' x 500'\$159.95
GC0571000	7' x 1,000'\$299.95

GCI Mediumweight Frost Protection

Use on nursery stock, vegetables, berries, and bedding plants. Protects from frost, wind, and insect damage.

- 70% light transparency
- 4–6 degrees frost protection

GC10750	7' x 50'\$31.95
GC107250	7' x 250'\$144.95
GC107500	7' x 500'\$283.95
GC1071000	7' x 1,000'\$429.95

WATERING SYSTEM HEALTH

MAGNETIC WATER CONDITIONING



Magnetic water conditioning sets can help soften hard water without chemicals. As water passes through the magnetic field, lime, and calcium are suspended so they can be flushed out of the system instead of building up in drip emitters, pipes, appliances, toilets, and tubs. The units are sized for maximum pipe flow. Magnets may be doubled up for higher flows. Works on PVC, copper, and poly pipe. Do not install on iron pipe or underground.

- Helps eliminate and prevent scale buildup
- Reduces costly maintenance
- Requires no power, salt, or chemicals

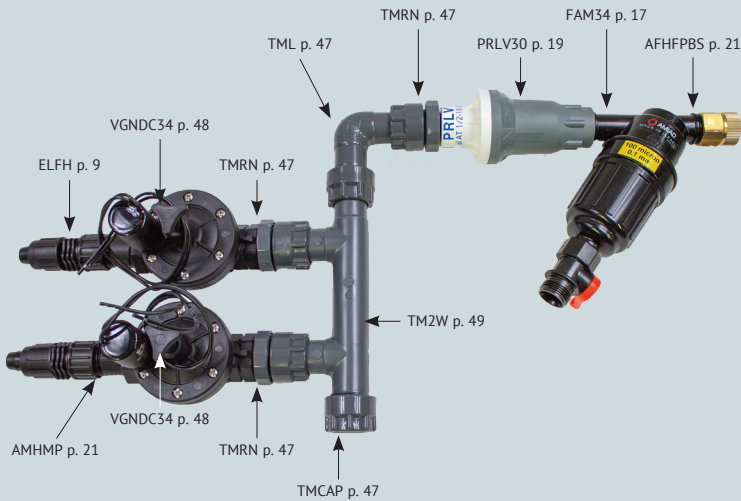
MAG1	Drip System, ½"-1" Pipe @12 GPM\$79.95
MAG2	Whole House, ½"-1" Pipe @12 GPM\$149.95
MAG3	Ag/Industrial, 1" Pipe @25 GPM\$219.95



Flush Valves

The flush valve opens when pressure drops below 2.5 PSI to drain standing water in the supply lines and prevent prolonged dripping on your plants and seedlings.

VFH	Female Hose Thread\$1.29
VFP	¾" Female Pipe Thread	...\$1.29



MANIFOLD SWIVEL SYSTEM

These PVC fittings let you create a flexible, compact manifold for almost any valve situation. The manifolds go together in minutes and the valves can be positioned more closely than if using standard PVC fittings. Valves are easy to align and systems are easy to expand.

All swivel pieces are 1" female pipe thread (with O-rings) and can be easily reduced for 3/4" valves. All manifold parts are 1" pipe thread unless noted. No glue or tools needed, so add-ons are a breeze. Use Thread Sealant Tape on all pipe threads without O-rings. Maximum working pressure is 150 PSI.

Find helpful tips on manifold selection and setup at DRIPWORKS.COM

MANIFOLD FITTINGS

All manifold swivel parts should be hand-tightened only. A manifold attached to a faucet should rest at ground level using a high-pressure hose extension (p. 20).



Multi Outlet Swivel Manifolds

TM4W▲	4 Outlet, 15" long	\$32.25
TM3W▲	3 Outlet, 11" long	\$27.95
TM2W▲	2 Outlet, 7½" long	\$15.95

Manifold Fittings

TM1S▲	Swivel x 1" MPT	\$4.95
TM34SOC▲	Swivel x ¾" Slip Socket	\$5.60
TM1SOC▲	Swivel x 1" Slip Socket	\$4.95
TMC▲	Cross, 3 Swivels x 1" MPT	\$13.25
TMT▲	Tee, 2 Swivels x 1" MPT	\$8.95
TMCAP▲	Cap, 1" FPT	\$2.15
TML▲	Elbow, 90° Swivel x 1" MPT	\$8.35
TMRN	Reducing Nipple 1" x ¾" MPT	\$2.55
TMN▲	Nipple 1" x 1" MPT	\$2.25
TMOR	Manifold O-Ring	\$0.85
TMSCP▲	Swivel x Swivel Coupler	\$6.85

Swivel x Barbed Fitting

TM34INS▲	Swivel x ¾" Barb	\$4.45
TM1INS▲	Swivel x 1" Barb	\$5.35



LUBRICANT FOR O-RINGS & HOSE WASHERS

Give your O-rings, washers, and gaskets a better watertight seal and prevent them from drying out and cracking with a dab of this "miracle" lubricant.

HLUBE	4 oz. bottle	\$5.95
-------	------------------------	--------

DC VALVES

These high quality, full flow, in-line battery operated DC valves are to be used with commercial-grade battery timers.



Baccara Battery Valve

The only DC valve that works with low pressure and low flow.

- 3/4" Female pipe thread inlet and outlet
- Flow Range: 0.5–22 GPM
- Pressure Range: 4.3–145 PSI

TDCBAC34 \$39.95



DIG Battery Valve

This DIG valve is a heavy duty, plastic in line control valve constructed of weather resistant, high impact material. Superior hydraulic performance. Pressure range for valve 10-150 PSI. 3/4" DC Valve, 0.1-28 GPM.

TDIGVA34 \$64.95



Alternator Valve

Don't pay for another timer or build a complex manifold to water two zones! Simply attach our hose-thread alternator valve. Ideal for remote applications.

- Flow switches outlets with each timer cycle
- No batteries required
- Allows flows up to 6 GPM
- Pressure range from 14–140 PSI
- Rugged, impact-resistant construction

TGNALT \$41.95



Galcon Battery Valves – 2 wires

Use with Galcon DC Battery timers.

- Battery or manual operation
- Female pipe thread inlet and outlet
- Pressure Range: 10 to 150 PSI

VGND34	3/4" Valve with Flow Control, 0.1–28 GPM \$40.95
VGND1	1" Valve with Flow Control, 0.2–35 GPM \$41.95
TGNVA112	1½" Valve, 20–130 GPM \$121.95
TGNVA2	2" Valve, 30–160 GPM \$132.95

Browse solenoid replacements
at DRIPWORKS.COM

AC VALVES

These high quality, in-line valves are designed for use with any of the electronic AC timers we carry. These valves operate at low flows to accommodate the lower water use of drip systems.



Galcon AC In-line Valves

These high-quality 24-volt AC valves are compatible with most AC timers. Galcon valves feature an easy-to-use manual on/off switch, female pipe thread (FPT) inlet and outlet, flow control stem, and a wide flow range. Pressure range for all valves is 7–145 PSI.

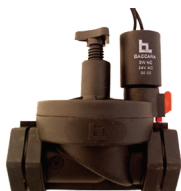
VGNAC34	¾" Valve, 0.5–26 GPM.	\$33.95
VGNAC1	1" Valve, 0.5–44 GPM.	\$34.95
VGN112	1½" Valve, 22–140 GPM.	\$109.95
VGN2	2" Valve, 22–176 GPM.	\$131.95



Irritrol Ultra Flow 700 Series Valves

This Irritrol valve features a straight-through flow path which greatly reduces pressure loss. This valve has a glass-reinforced nylon body and bonnet, stainless steel spring and hardware, and its rugged nylon-reinforced Buna-N diaphragm adds an extra dimension of toughness to very durable valve. Pressure range for valve 5-100 PSI. 0.1-150 GPM

VIR700-1	1" AC Valve.	\$125.48
VIR700-1.5	1½" AC Valve.	\$175.95



Baccara AC Valve

The only electric AC valve that works with low pressure and low flow. Baccara valves have a large pressure range of 4.3 to 140 PSI and a very low head loss at high flow rates. Their efficient design and advanced technology plastics make the valves strong with very low maintenance.

VBAC34	¾" Valve.	\$32.95
VBAC1	1" Valve.	\$39.95



Irritrol 2700 Series Anti-Siphon Valves

Irritrol anti-siphon 2700 series valves offer optimum reliability, and performance. Their ease of use makes them suitable for a wide variety of residential applications. These valves have a built-in atmospheric vacuum breaker to eliminate back siphonage as well as a flow control and manual shut off. Pressure Range for valve is 10-150 PSI. ¾" AC Valve, 0.25-30 GPM

VIR2711APR	Stainless Screw Bonnet. . .	\$26.10
VIR2711DPR	Threaded Bonnet.	\$26.10



Rainbird Anti-Siphon Valves

This is the only AC anti-siphon valve we have found that is specifically designed for the low flow of a drip system. Pressure range is 15–150 PSI. 3-year warranty. Note: The top of the valve should be 6" above the highest emitter in the system.

VRBAS34	¾" Valve, 0.2–22 GPM* ..	\$24.95
VRBAS1	1" Valve, 0.2–40 GPM*....	\$24.95

*With 7 PSI pressure loss.



Hunter Jar Top AC Valve

This is the perfect valve for people who believe system maintenance should be simple. Most automated valves fail because of debris inside the valve. With a simple twist, the top of the valve will unscrew, and the valve can be inspected and cleaned. Pressure range for valve 20-150 PSI. 0.2-30 GPM

VHJAR	1"AC Valve.	\$29.95
-------	------------------	---------

*Batteries not included.



WIFI TIMERS

AC Timer:

B-HYVE SMART INDOOR/OUTDOOR CONTROLLER

This timer offers WeatherSense technology that provides watering based on site conditions such as slope, soil type, sun/shade, historical et and live weather feeds, it automatically adjusts your controller to deliver the right amount of water to your plants. With the B-hyve controller you can control from anywhere. The B-hyve app is fully functional for android, iOS or web devices and gives you control wherever you need it program your timer on the app, at the timer, or let the weather-based software create a program for you.

- Easy Installation
- Indoor/Outdoor model
- EPA WaterSense Certified
- Durable and Secure
- Weather resistant case
- Use with 110V

TORBHV6	6-Station Timer.....	\$189.95
TORBHV12	12-Station Timer.....	\$225.95



See Video



Battery Hose End Controller:

B-HYVE XD HOSE FAUCET TIMER

The Brilliance of B-hyve® Science comes to life in our first hybrid hose tap water management device! You have the flexibility to program remotely from the B-hyve® mobile app. Compatible with iOS – iPhone, iPad and iPod Touch Running iOS 13.5 and higher. Android - Android Version 5.0 and higher. Requires 2.0 Hub to activate Smart functions.

- Single port or Two port models available
- Threads: 3/4" Hose Thread
- Pressure: 10-100 PSI
- Batteries: 2 AA batteries (not included)
- Warranty: 2 years.

TORBHVHS	Single Station Timer	\$59.95
TORBHVHS2	2-Port Timer	\$76.95
TORBHVHS4	4-Port Timer	\$94.95
TORBHVHUB	Wi-Fi Hub.....	\$45.95





TIMERS FOR EVERY NEED

DripWorks carries a large selection of drip irrigation AC, battery, solar, and windup timers. That gives you the option to match your timer to your source of power, or lack thereof.



BEST SELLER!

HOSE END TIMER

Easily program for weekly/daily or cyclic operation on LCD display. Standard female hose thread inlet / male hose thread outlet. Program from 14–90 ft. with clear view, easy programming with digital readout, manual override, manual rain off, and low battery indicator.

TGNHOSEBT Blue Tooth \$74.95
 TGNHOSE Non-Blue Tooth \$72.95

Start Times Up to 4 per day
Programming Daily/Weekly or cyclic
Duration 1 minute to 12 hours
Stations 1 station
Batteries One 9-volt alkaline*
Pressure Range 15 to 145 PSI
Flow Range 0.5 to 5.2 GPM @ 30 PSI



GROWERS CHOICE

HIGH FLOW LCD TIMER

Built-in high flow valve with 3/4" or 1" female pipe thread inlet and outlet. 3/4" model includes adapters for female hose inlet and male hose outlet. Adapters for other outlet sizes not included. Removable controller for easy programming, water-resistant construction, manual override, and low battery indicator.

TGNHFBTK 3/4" High Flow Bluetooth Timer \$139.95
 TGNHFK 3/4" High Flow Timer \$98.95
 TGNHF1BT 1" High Flow Bluetooth Timer \$124.95
 TGNHF1 1" High Flow Timer \$98.95

Start Times Up to 4 times per day, every day up to 30 days.
Programming Daily up to 30 days
Duration 1 minute to 12 hours
Stations 1 station
Batteries One 9-volt alkaline*
Pressure Range 10 to 115 PSI
 Bluetooth 10–145 PSI
Flow Range 3/4": 0.5 to 28 GPM @ 30 PSI
 1": 0.5 to 32 GPM @ 30 PSI



FLIP OPEN LCD TIMER

Flip open panel. Standard female hose thread inlet and male hose thread outlet. Watertight battery compartment. Program from 14-90 ft. with clear view.

TGNLIDBT Bluetooth Timer \$79.95
 TGNLID Timer \$72.95

Start Times Up to 4 per day
Programming Daily/weekly
Duration 1 minute to 12 hours
Stations 1 station
Batteries One 9-volt alkaline*
Pressure Range 15 to 115 PSI
 Bluetooth 15-145 PSI
Flow Range 0.5 to 5.2 GPM @ 30 PSI

BATTERY TIMERS

Easy to install and to program, a battery timer will turn your system on and off at designated times so plants get the steady, consistent watering they need for optimum health and production.



MULTI-VALVE LCD TIMER

Single program timer for up to 4 hose-mounted valves. Valves operate in sequence. Includes 4-outlet manifold, timer, and two valves (add two more valves as needed).

- TOR4W With Two Valves \$95.95
- TOR4VA Add-on Valve \$24.95

Start Times	Up to 3 per day—select specific days of the week
Duration	1 to 99 minutes (per valve)
Stations	4 stations
Batteries	Two AA alkaline*
Pressure Range	10 to 80 PSI
Flow Range	0.5 to 6.5 GPM per each valve



ZERO PRESSURE TIMER

The Green Timer EVO operates at zero-pressure. This timer is ideal for gravity fed low-pressure systems. The TIZP uses a mechanical ball valve to open and close. Easy-to-set dials, low battery indicator, manual operation, standard female hose thread (FHT) inlet and male hose thread (MHT) outlet, and time delay function up to 12 hours.

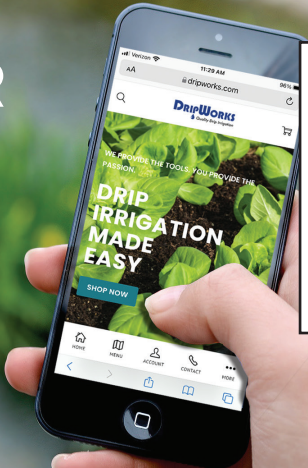
TIZP \$49.95

Stations	1 station
Start Times	1, 2, 3, 4, 6, 8, 12 hours or 1, 2, 3, 7 days
Programming	First dial sets duration: 1 minute to 2 hours. Second dial sets frequency: every hour up to once a week.
Duration	Select 1, 3, 5, 10, 15, 20, 30, 60, 90, or 120 minutes
Batteries	Two AAA alkaline*
Pressure Range	0 to 115 PSI
Flow Range	Up to 7.5 GPM at 50 PSI
Warranty	2 years

FIND THE RIGHT TIMER FOR YOUR WATERING NEEDS

You can connect with live experts, check out how-to videos, calculate every aspect of your plan, and find the answers you need all in one place.

Dripworks.com



Drip Irrigation AC, Battery, Solar and Windup Timers

BATTERY DC TIMERS

Commercial-grade timers operate full-flow, inline DC valves that are sold separately (unless noted otherwise). Multiple zones can be watered from one timer with our automatic distribution valves.



GREENHOUSE BATTERY TIMER

Solid construction and watering durations down to 10 second intervals make this battery timer an exceptional bargain. Perfect for greenhouse operations and seed propagation. Independent programming for each valve, manual operation, rain sensor capable, master valve capable, and weather resistant.

- TGNGH 1 Station \$143.95
- TGNGH6 6 Station \$169.95

- Start Times** Up to 4 per valve per day in irrigation mode; multiple start times available in misting mode.
- Programming** Weekly/Cyclical
- Duration** 10 second to 12 hours
- Stations** 1 or 6 station models
Use with Galcon DC valves, sold separately
- Batteries** TGNGH: One 9-volt alkaline*
TGNGH6: Two 9-volt alkaline*



1 TO 4 STATION BATTERY TIMER

These one or four station timers are ideal for home use. They are simple to install and program. Independent programming for each valve, manual operation, rain sensor capable, master valve capable, and weather resistant.

- TGN1ST 1 Station \$149.95
- TGN4ST 4 Station \$124.95

- Start Times** Up to 4 per valve per day
- Programming** Daily/Monthly
- Duration** 1 minute to 12 hours
- Stations** 1 or 4 station models. Use with Galcon DC valves, sold separately.
- Batteries** One 9-volt alkaline*



6 TO 12 STATION BATTERY TIMER

This commercial-grade battery timer has a sturdy, waterproof housing that makes it ideal for watering multiple areas in locations that are too remote for an AC timer. Irrigation or propagation modes. Independent programming for each valve, rain sensor capable, manual operation, sensor port to individual valves, master valve capable, seasonal adjustment by program, and weather resistant.

- TGND6 6 Station \$279.95
- TGND9 9 Station \$321.95
- TGND12 12 Station \$334.95

- Start Times** Up to 4 per valve per day in irrigation mode; multiple start times available in misting mode
- Programming** Weekly/Cyclical
- Duration** 10 second to 12 hours
- Stations** Available in 6, 9, or 12 station models.
Use with Galcon DC valves, sold separately
- Batteries** TGND6: Two 9-volt alkaline*
TGND9: Four 9-volt alkaline*
TGND12: Four 9-volt alkaline*



XC HYBRID 6 STATION TIMER

The Hunter XC Hybrid will operate on 6 AA batteries and provide great water management control. With the global seasonal adjustment (0-150%) you can alter the amount of watering to accommodate changing weather conditions.

- THXH6 Hunter \$239.95

- Start Times** Up to 4 per program per day
- Programming** Weekly, odd/even days
- Duration** 1 min to 4 hrs
- Stations** 6

ELECTRONIC AC TIMERS

These are the most reliable timers that you can get for your irrigation system and generally have greater flexibility and longer life than battery timers.

4 TO 12 STATION AC TIMER



These controllers are especially suited for greenhouse and misting applications. Easy to install and operate.

TGNAC4	\$198.95
TGNAC6	\$214.95
TGNAC9	\$239.95
TGNAC12	\$249.95

Stations	Available in 4, 6, 9, or 12 station models.	Programs	Independent programs for each valve
Start Times	Up to 4 per valve per day in weekly schedule mode; multiple start times available in misting mode.	Watering Intervals	Once a minute to once every 30 days
Duration	5 seconds to 12 hours	Battery Backup	9-volt alkaline*
Ports	Pumpstart/Master Valve	Warranty	2 years

HUNTER PRO C AC TIMER



Expandable!

The Pro C controller is a 4-station model that can be expanded up to 16 stations to meet homeowner and commercial needs. Programmable delay between stations (0 seconds to 4 hours). Programmable rain delay. Optional remote control.

THPREXT4	4-Station Exterior Timer	\$189.95
THPRINT4	4-Station Interior Timer	\$169.95
THPRMOD	3-Station Add-On Module	\$54.95
THPRMOD9	9-Station Add-On Module	\$199.95

Stations	4 (up to 16 with modules)	Programs	3
Start Times	4 per program	Watering Intervals	1 to 31 days
Duration	1 minute to 6 hours	Battery Backup	Unnecessary
Weekly Schedule	Days of week, odd/even days	Warranty	2 years
Ports	Pumpstart/Master Valve, Rain sensor with bypass, 1 master plus 2 valves maximum open		

GALCON 6 STATION GREENHOUSE AC TIMER



This indoor irrigation and propagation controller is used for gardening, greenhouses, nurseries, and large grows. The easy-to-program LCD screen offers independent programming of each valve with the ability to operate two valves simultaneously. Program specific "windows" of time.

TGNR6	\$129.95
-------------	----------

Duration	Irrigation mode: Duration 1 minute to 12 hours Irrigation Cycle 4 times a day to once every 30 days Propagation mode: 5 second increments	Programs	4 independent programs per station
Stations	6 stations	Watering Intervals	1 to 30 days
Start Times	Irrigation mode: 4 Propagation mode: 1	Battery Backup	9-volt alkaline*
Weekly Schedule	Days of week, AM/PM modes	Warranty	3 years
Ports	Pumpstart/Master Valve, Rain Sensor		



RAINBIRD 4 STATION IRRIGATION CONTROLLER

The Rainbird 4 Station Irrigation Controller is expandable up to 22 stations using hot-swappable 3 or 6 station expansion modules. For indoor and outdoor use. Wi-Fi Connectivity compatible with the Rain Bird LNK Wi-Fi module. Simply plug in the module to access, operate and monitor your irrigation system from any mobile device.

TRB-ESP4ME 4 Station Timer \$165.95
 TRBLINK2 Wifi Module \$95.95

- Start Times** Up to 6 per program per day
- Programming** Custom days, odd/even, cyclical
- Stations** Expandable up to 22 Station with modules (available online)



LEIT SOLAR TIMER

Powered by ambient solar light, this DIG timer is the world's first sustainable irrigation timer with no battery or AC power source! No direct sunlight required. Valves have female pipe thread (FPT) inlet and outlet. Manual on/off, power saving LCD screen, monthly seasonal adjustment (0–200%), flow control handle, and timer is removable from valve for easy programming.

TDLT34 Timer with ¾" Valve . . . \$139.95
 TDLT1 Timer with 1" Valve . . . \$149.95

- Stations** 1 station
- Start Times** Up to 5 per day
- Programming** Weekly calendar, odd days, even days, or intervals from 1-30 days
- Duration** 1 minute to 6 hours
- Ports** Rain sensor compatible, see online
- Pressure Range** 10 to 150 PSI
- Flow Range** TDLT34: 0.1 GPM to 25 GPM
 TDLT1: 0.1 GPM to 30 GPM



190 Sanhedrin Circle
Willits, CA 95490-8753

PRSR STD
U.S. POSTAGE
PAID
DRIPWORKS, INC.

Emitter Tubing • Drip Tape • Mainline Tubing • Timers • Fittings • Injectors • Pond Liners

OFFERING THE BEST PRODUCTS

DripWorks is excited to announce the expansion of our product lineup, now offering a wider selection of sprinklers, tools, and more! We are proud to carry trusted brands such as Irritec, DIG Irrigation, Toro, Irritrol, Jain, K-Rain, Netafim, Rain Bird, and Hunter. These brands are known for their high quality and reliable performance, ensuring that our customers receive the best products for their irrigation needs.

We appreciate your business and continued support for quality products, which allows us to continue our mission for a cleaner, healthier, and more sustainable future for all of us, and the generations to come.



SAVE WATER, TIME, AND MONEY

JOIN OUR COMMUNITY

Keep up with DripWorks on Facebook, YouTube, Instagram, and Pinterest.

@DripWorksUSA



DRIPWORKS.COM
800.522.3747